



UNICONTROL
MACHINE CONTROL MADE SIMPLE

UNICONTROL ROVER

UnicontrolRover is a user-friendly GNSS-Rover with built-in tilt-compensation, designed for user-friendliness, requiring no prior technical knowledge.

The UnicontrolRover is an effective solution that makes staking out and measuring easy and precise. Obtain complete overview of points, lines and designs with a familiar and intuitive interface. Share as-built data directly with machines & office, optimizing the documentation process and ensuring quality assurance. A solution tailored to the site foreman or groundworker.

Visit unicontrol.io for more information.

unicontrol.com

CONTACT US

+45 89 800 240
contact@unicontrol.io
unicontrol.io

UNICONTROL
MACHINE CONTROL MADE SIMPLE



**UNICONTROL
ROVER**

STAKE OUT, MEASURE &
DESIGN EASIER & FASTER

unicontrol.com

EASY & EFFICIENT

The UnicontrolRover makes staking out points & lines easier than ever before. The intuitive interface provides easy access to menus and data, allowing you to start stake out and measure in just a few touches on the screen. The UnicontrolRover gives you access to functions where you can easily create surface designs or make volume calculations. Once surfaces, lines & points are uploaded with the Rover, the UnicontrolCloud automatically synchronizes all data with machines, workstations and office, creating a simple and effective workflow.

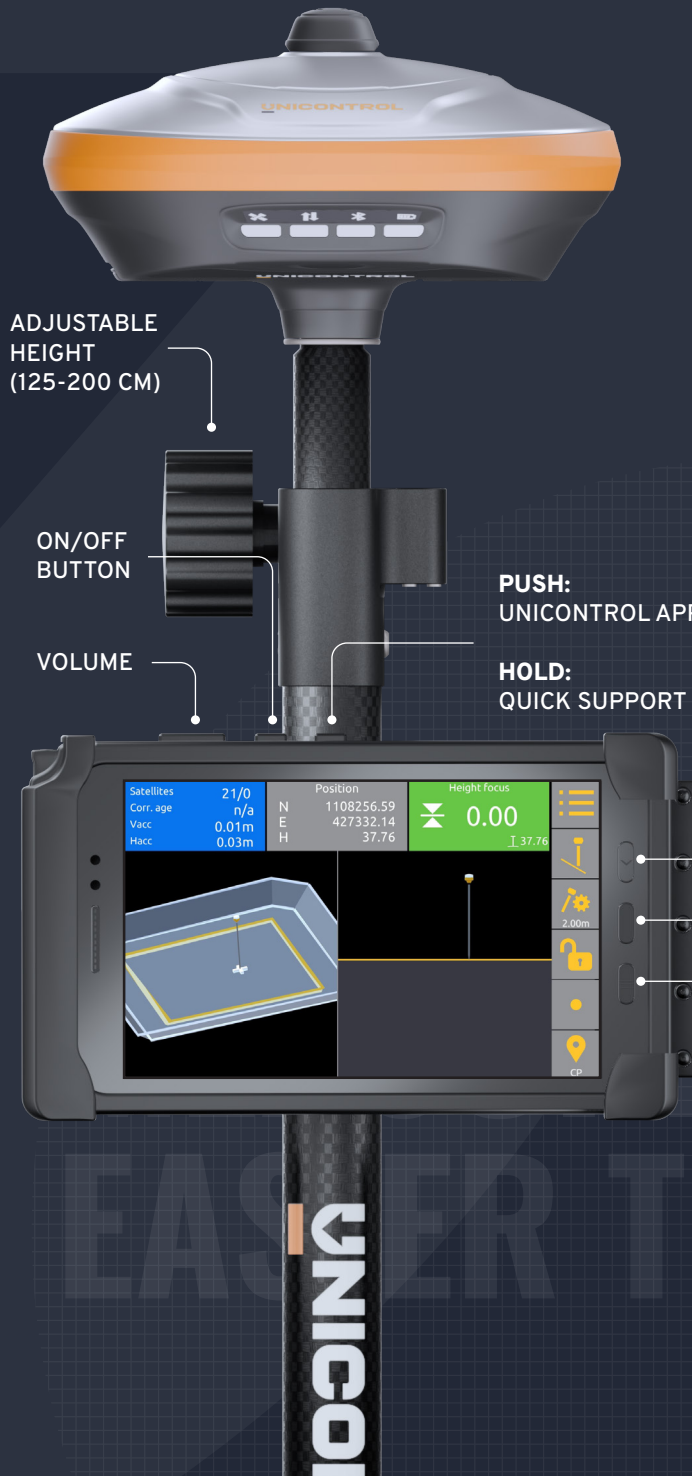
INSTANT FILE SYNCHRONIZATION

Working files are seamlessly and instantly synchronized via UnicontrolCloud. Files are shared directly with operating machines and workstations – a perfect synergy to save time and improve collaboration.

DOCUMENTATION & EASY QUALITY CONTROL

Get the job done easily while receiving data for quality assurance. Documentation and quality assurance is done with ease, with precisely measured data transferred between the UnicontrolRover, workstations and office. The work is documented constantly. With precise measurements, designs and as-built data, the job is done accurately and easily the first time!

contact@unicontrol.io



GENERAL FUNCTIONS

- Measure and stake out points and lines
- Advanced In-field Designs
- Export designs: xml, dxf, csv, kof & pxy formats
- Volume Calculations
- Automatic Point Logging
- Automatic synchronization to UnicontrolCloud and other systems
- Load XML & DXF design files
- Integrated tilt-to-go function
- Built-in UHF radio

EASIER THAN EVER

