

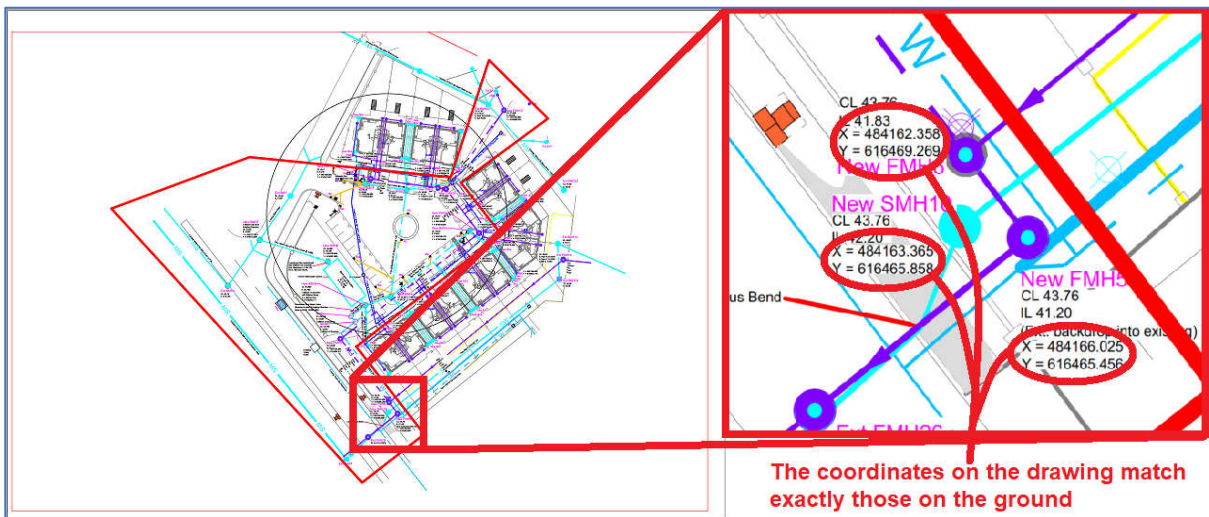
GEOREFERENCE

Hard copy (printed) drawings are georeferenced when there are points marked on the drawings with coordinates which are the same as the coordinates of those points on the ground.

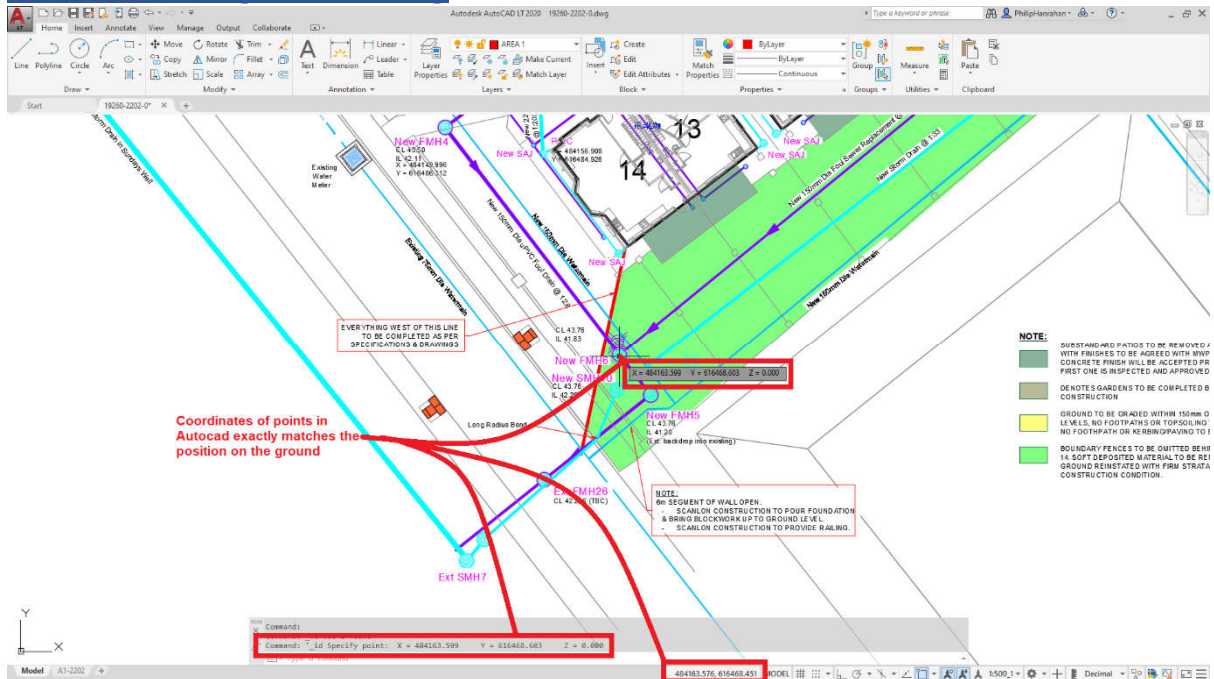
Digital drawings are georeferenced when the coordinates of any point on the drawing is the same as the coordinates of those points on the ground.

Example 1: Printed drawing

There are a number of points (mostly manholes) marked on the drawing with coordinates. These coordinates match exactly the position of the manhole on the ground in the national grid system

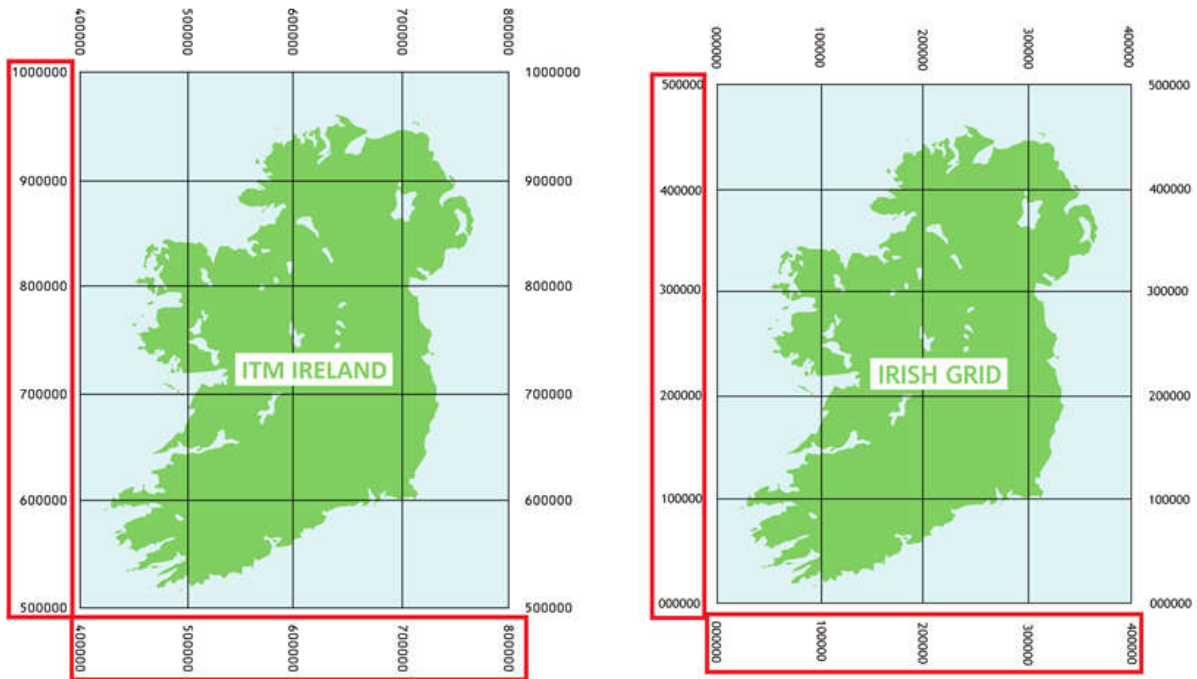


Example 2: Digital drawing



What are national grid coordinates?

There are 2 national grids in use in Ireland:



Any point in Ireland will have coordinates with 9 digits like this: (123456.789, 123456.789). Usually the first coordinate is the Easting and the second is Northing.

The above images show the range of coordinates that you can have in either system. Note you cannot have the same coordinates in both systems.

ITM Ireland is recommended by Ordnance Survey Ireland since 2001.

Irish Grid is still in common use.