

HOW TO SET OUT WITH THE ZENITH10-20

Setting out

Start the instrument as you would for surveying (see datasheet *How to Survey with the Zenith10-20*) until you get to the Map View with Fixed Point on RHS of the display, see first image below.

Use the screen control icons on the top of the screen to zoom to the area you want to view:

Zoom Icons from Left to Right:

Zoom Extents

Zoom In/Out: +/- sign, drag up/down the screen to zoom

Zoom Window: Drag stylus diagonally across the window area

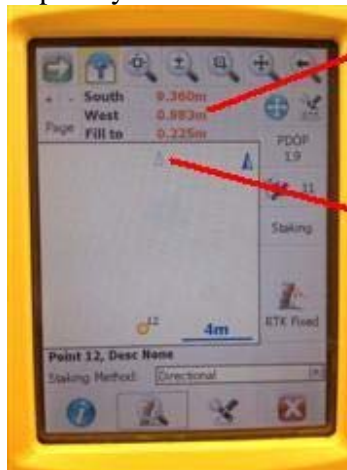
Pan: 4 pointed arrows

Return: Left-pointing arrow, returns to previous screen

N.B.: When using the screen controls an icon is green if it is active. To use any other functions you must tap the icon again to return it to background grey, this turns off the icon.



Tap on the point you want to set out; set out screen loads, tap Stake icon

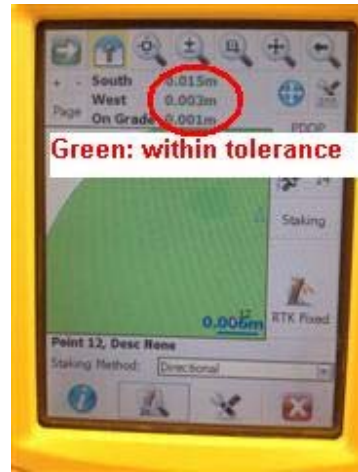


Distance to point

Your location, arrow turns blue when you move.

Keep the point of the blue arrow on the line and move towards the point

Point details are displayed, tap Stake Point.



Tap Zoom icon, When near the point TURN and FACE NORTH (your L/R movements will then match the movements on the screen)
 When you have set out the point you can exit the screen (tap X and select the next point to be set out) or record the position of the set out point.

Recording position of set out point



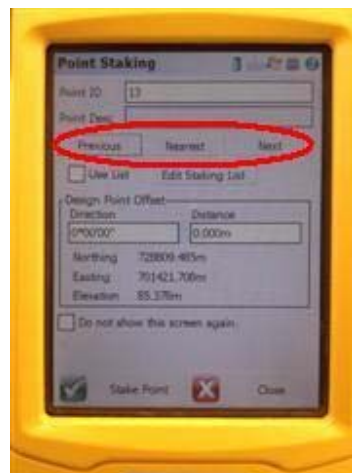
Tap RTK Fixed



Point is surveyed



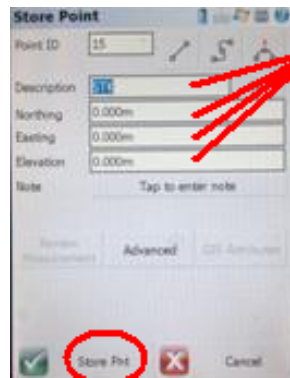
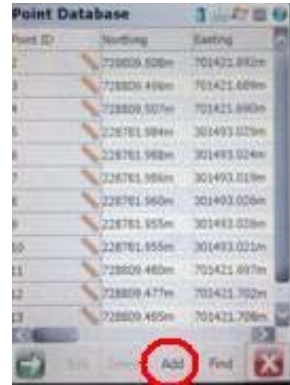
Results are displayed



Give point a description or choose from List. Select Previous/Nearest/Next point to set out, or close to choose from screen view

ENTERING SETTING OUT POINTS

Entering points 'on-the-fly'



Tap each field in turn and add Description, Northing, Easting, Height

Tap Store Point when finished

In Map View tap the color square. Tap Add
When finished entering points, tap Cancel and X to return to Map View

Upload points from an Excel spreadsheet

Enter points in the Excel spreadsheet in the following format:

Point Number, Easting, Northing, Height, Description.

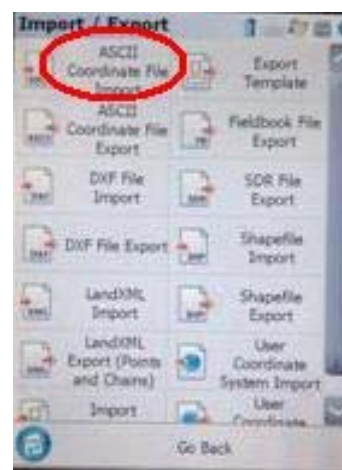
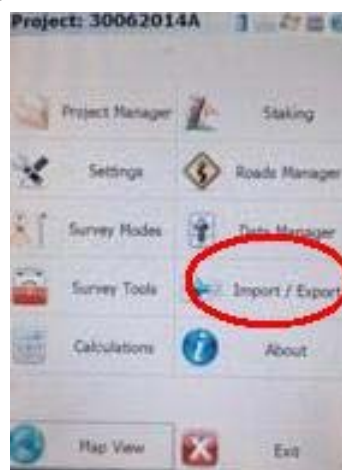
Save the file as a *.csv*(comma delimited) file.

In FieldGenius (FG) create a project for the file, if there is not a project for it already.

Connect the datalogger to your PC using the USB cable (or copy the file to a USB memory stick and connect using the USB Memory Stick Pigtail). The datalogger should appear as a *Mobile Device* in Windows Explorer. If it doesn't you need to install ActiveSync (for Windows XP or earlier) or Windows Mobile Device Centre (for Windows 7 or later)

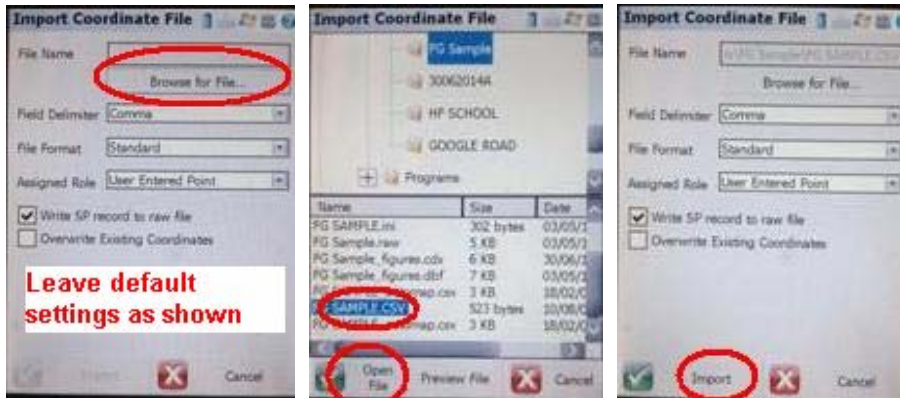
Transfer the file from the PC to the FG projects (*MobileDevice>My Windows Mobile Device>Program Files>Microsurvey Field Genius>FG Projects>Your Project Sub-folder*), and place it in the subfolder for the job you have created.

Start FG and open the project



In Map View, tap the Plumbob. Tap Import/Export

Select ASCII Co-ord File Import



Browse for the file. Highlight file & tap Open File. Tap Import
Display will show the number of points imported.

Upload points from an Autocad .dxf file

In Autocad export/save the drawing to be set out as a .dxf file (.dxf Version 11/12).

Note:

1. the file should not be greater than 5Mb. If it is, remove some layers/details until it is less than 5Mb, otherwise screen refresh on the datalogger may be slow.
2. Make sure there is at least **1 point (not just lines)** in the .dxf file. Otherwise when you Zoom Extents in Map View you won't be able to see the drawing – it will be too small.
3. When you export the .dxf file from Autocad, don't export it as a block
4. If you received the .dxf file from elsewhere, Explode the items in it before you export it to a .dxf file.

In FieldGenius (FG) create a project for the file, if there is not a project for it already.

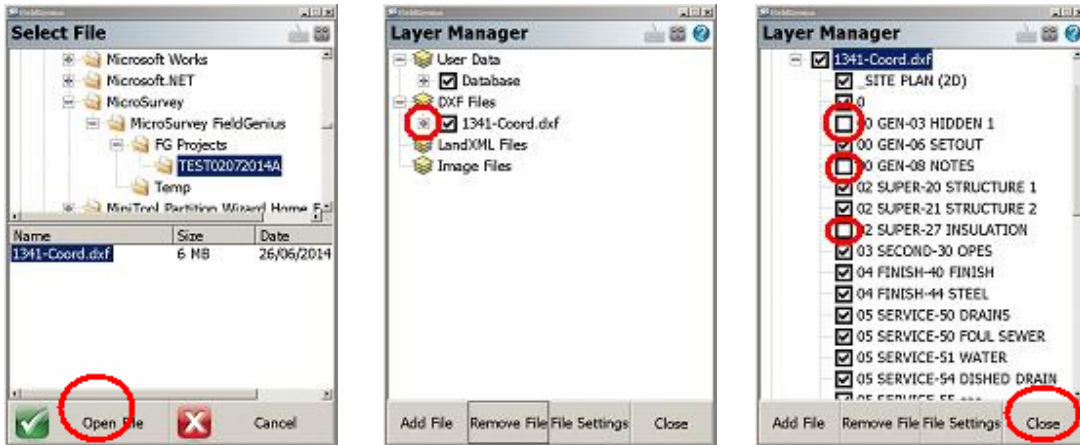
Connect the datalogger to your PC using the USB cable. The datalogger should appear as a *Mobile Device* in Windows Explorer. If it doesn't you need to install ActiveSync (for Windows XP or earlier) or Windows Mobile Device Centre (for Windows 7 or later)

Transfer the file from the PC to the FG projects (*MobileDevice>My Windows Mobile Device>Program Files> Microsurvey Field Genius>FG Projects>Your Project Sub-folder*), and place it in the subfolder for the job you have created.



In Map View, tap the Plumbob. Tap Import/Export

Select DXF file Import



Browse & highlight file, tap Open File. Expand layer list. Turn off unnecessary layers. Close

Convert Autocad lines to points

