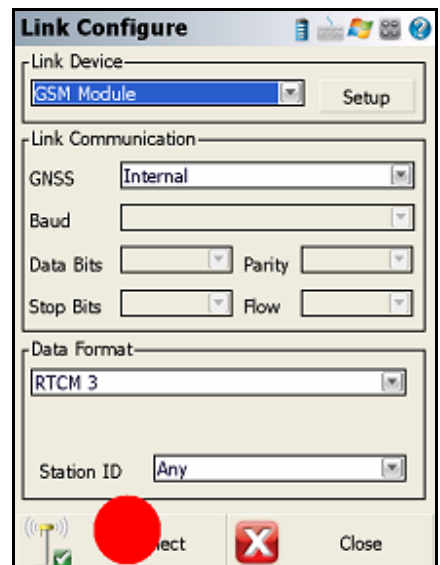
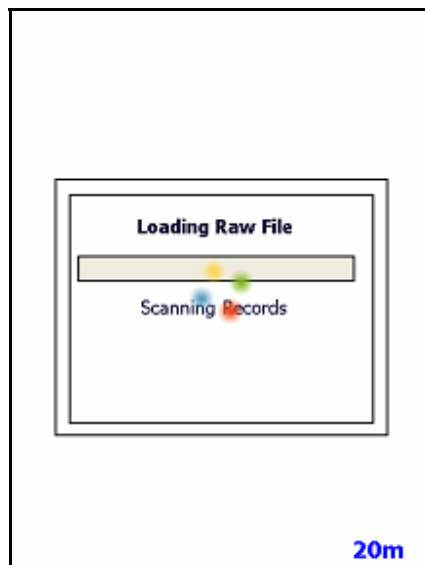
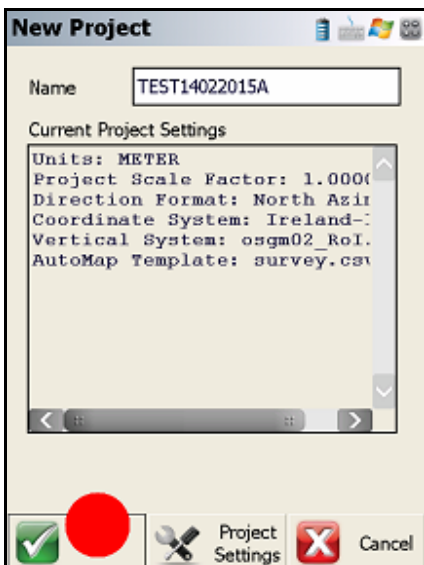
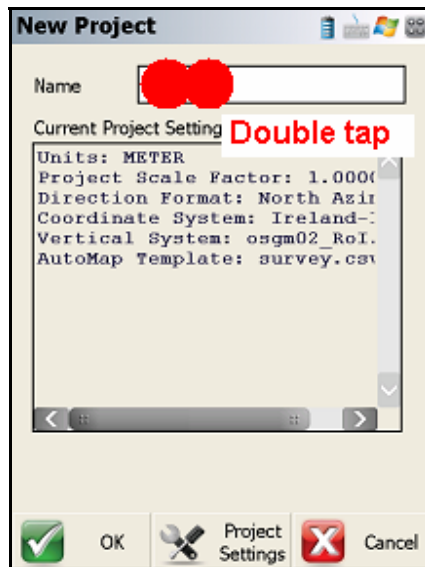
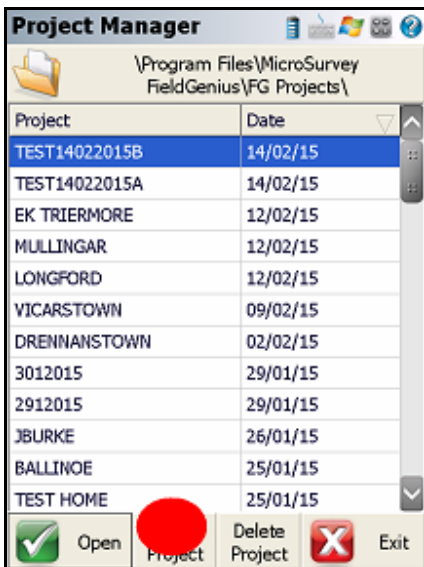
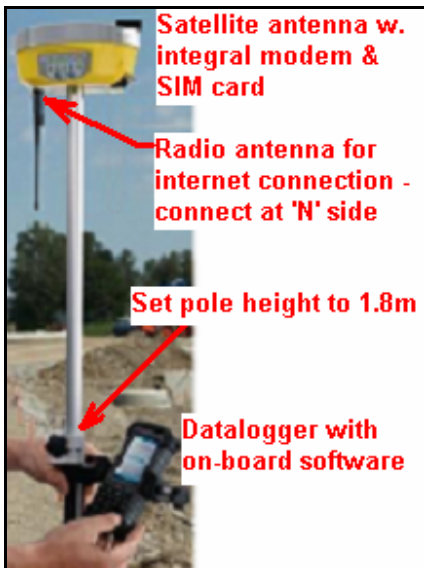
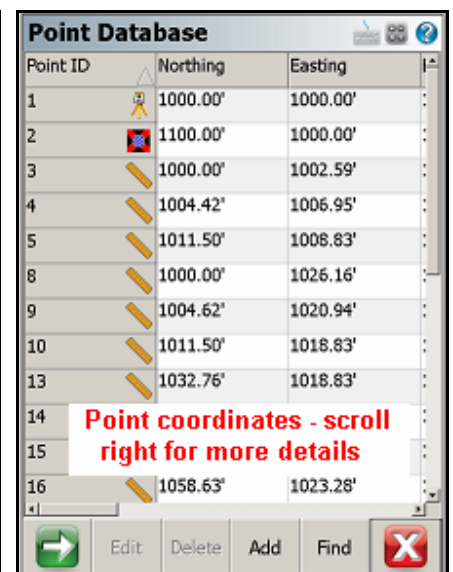
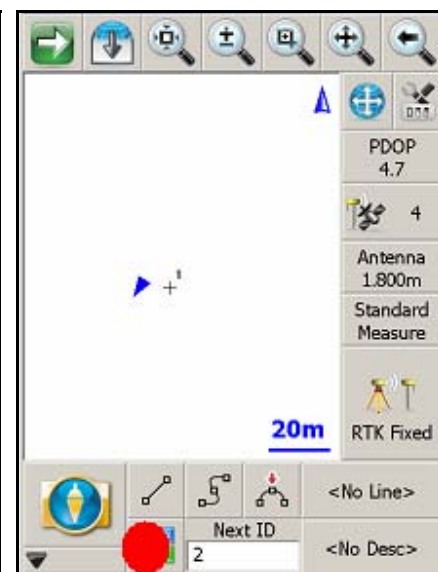
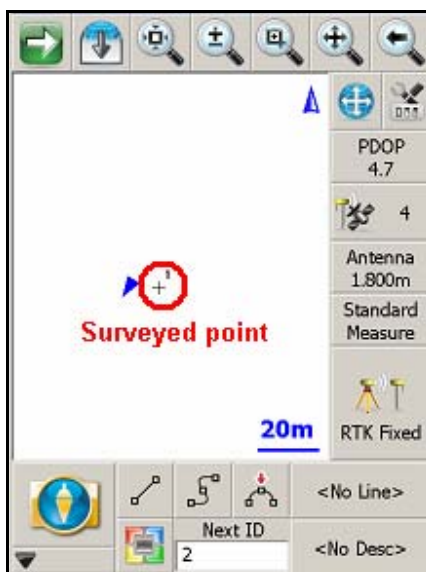
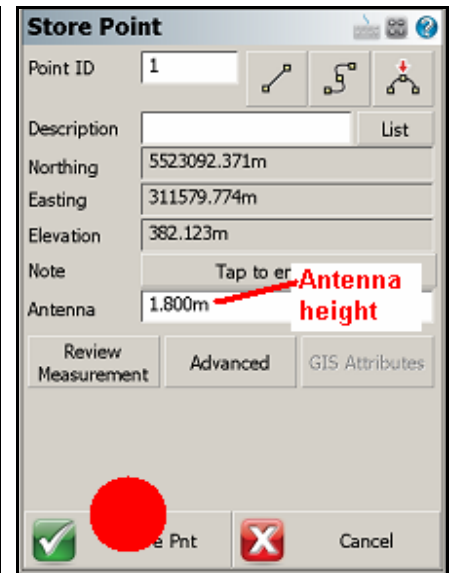
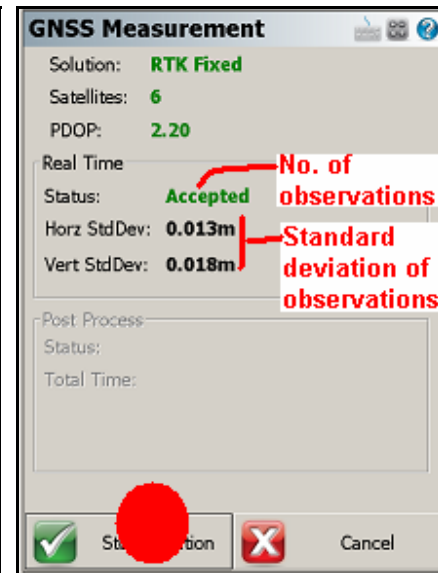
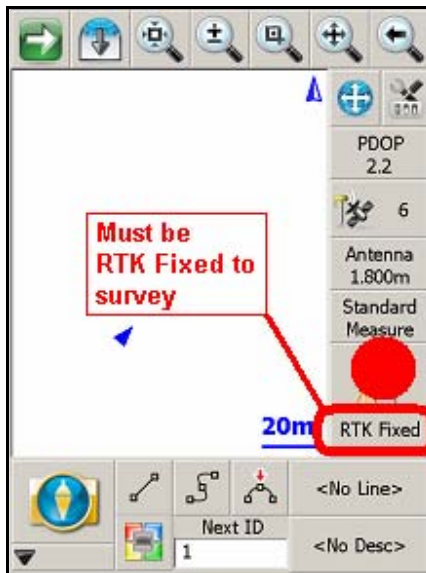
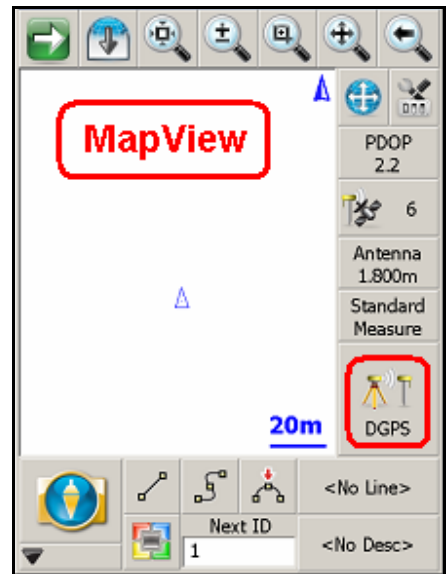
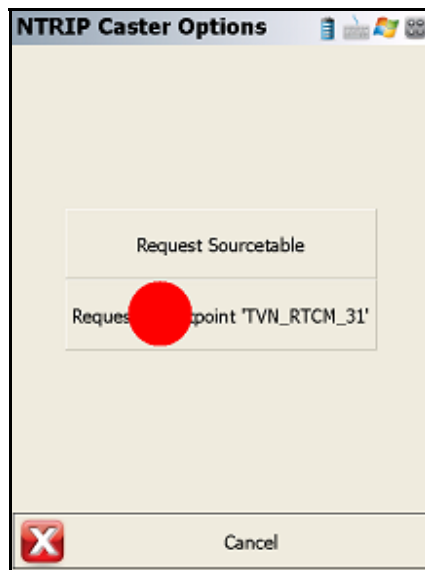
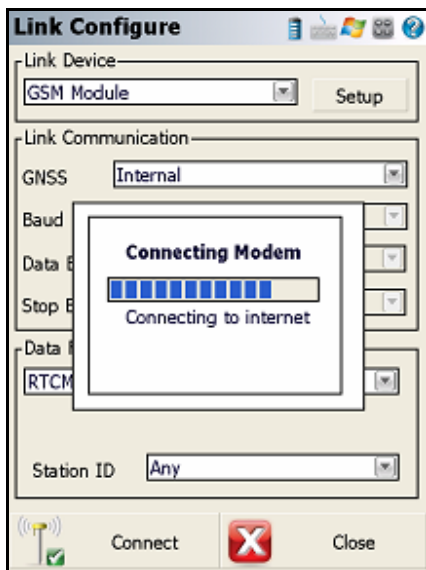
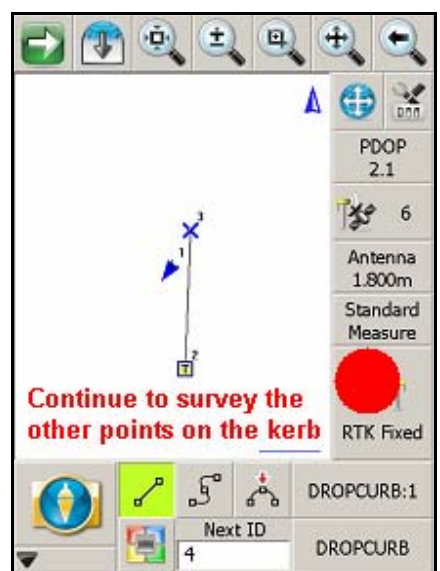
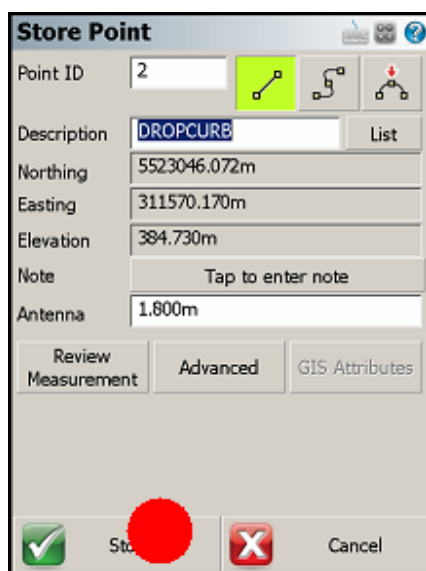
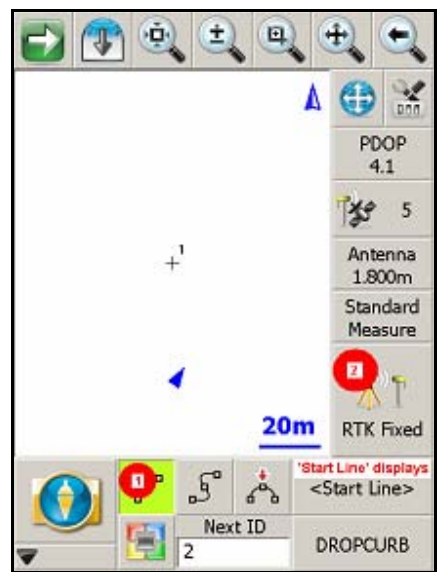
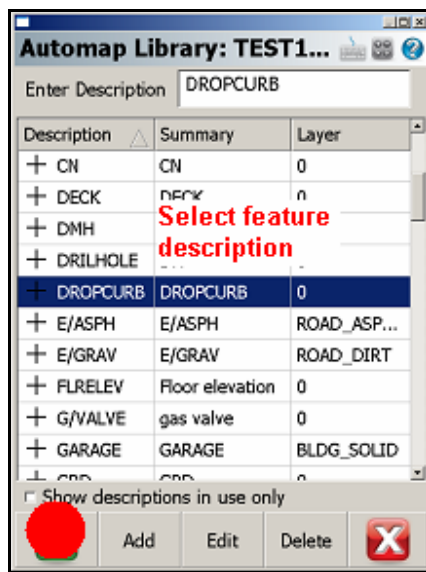
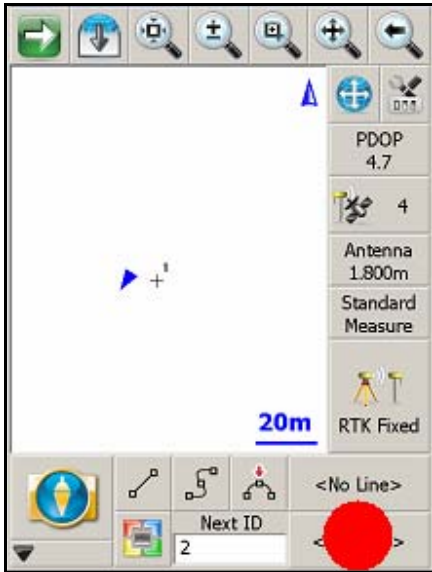


HOW TO SURVEY WITH GEOMAX ZENITH20 AND FG7

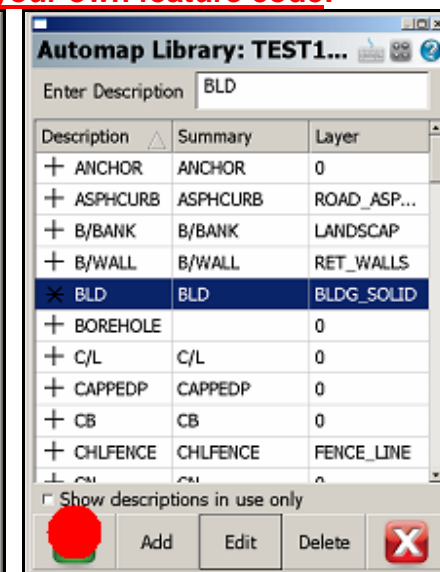
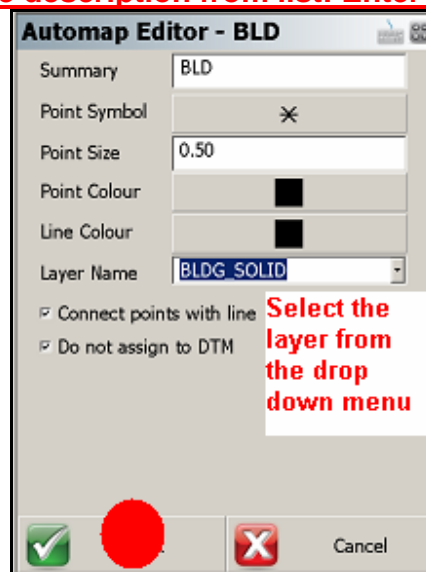
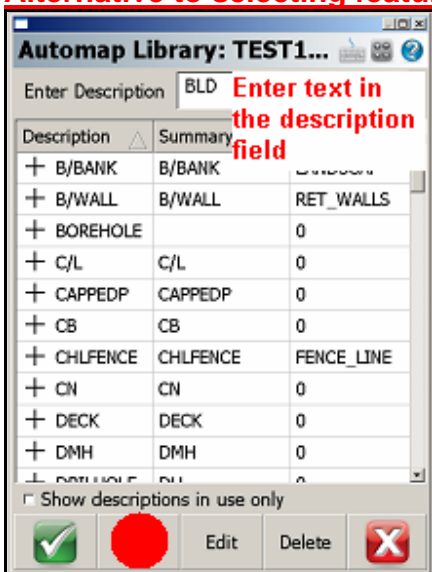




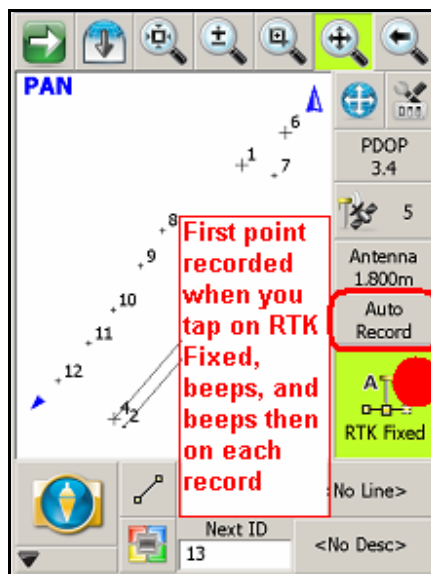
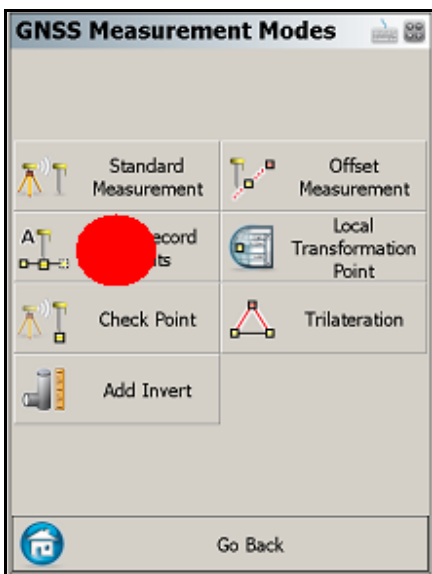
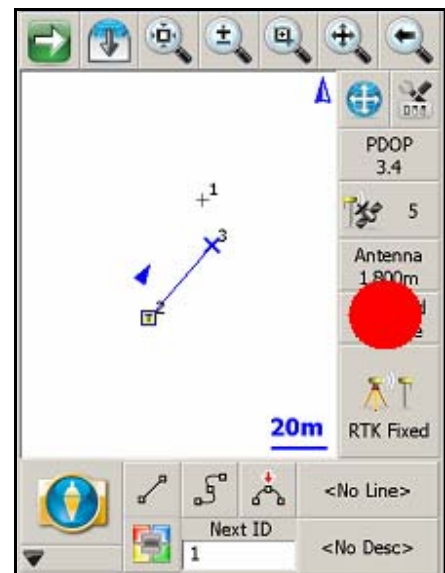
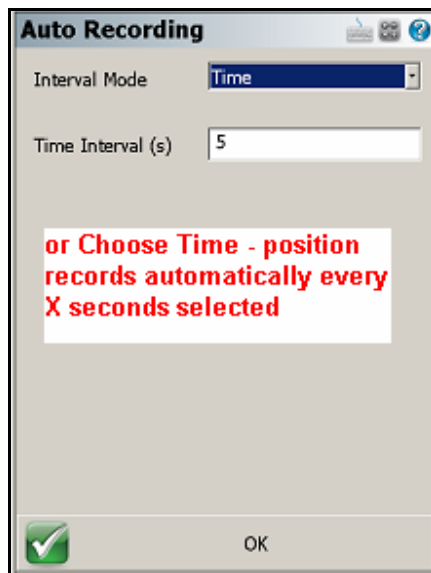
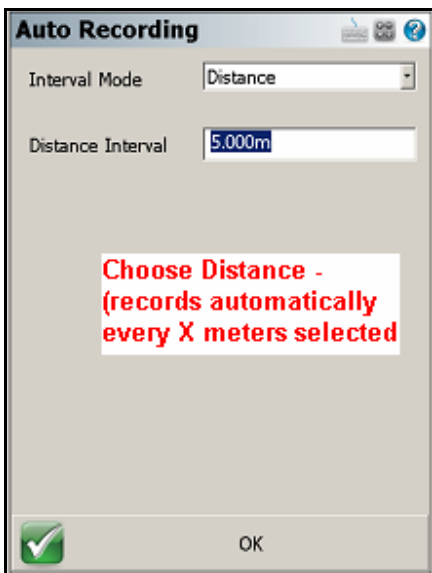
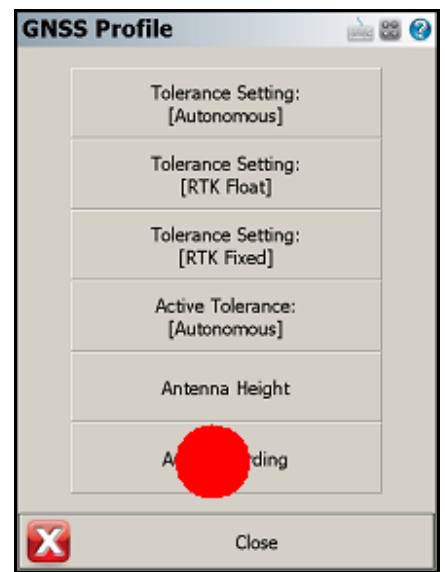
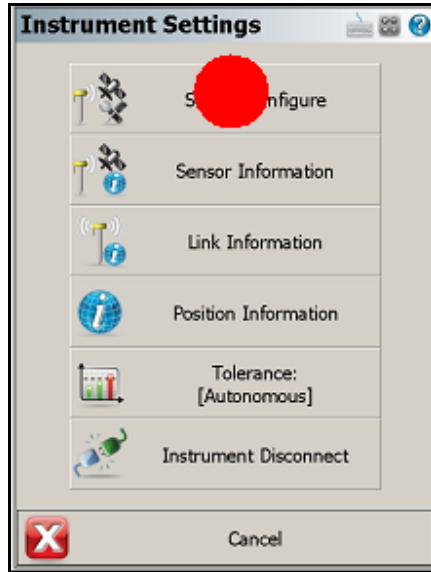
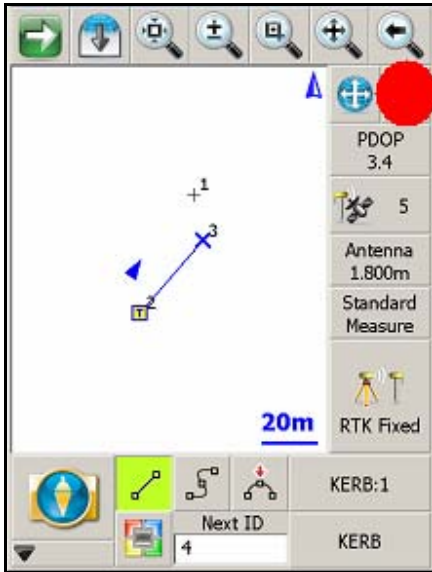
SURVEYING LINES & FEATURES



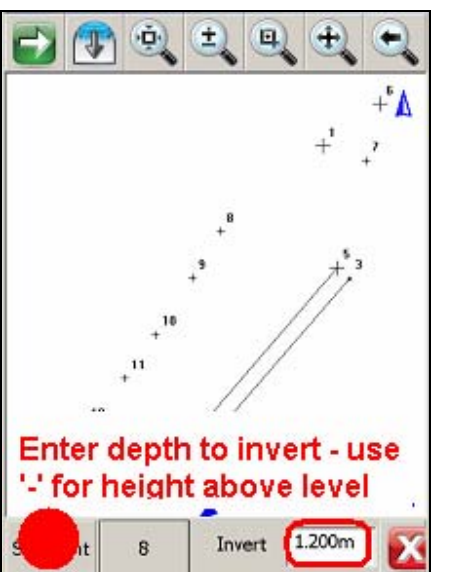
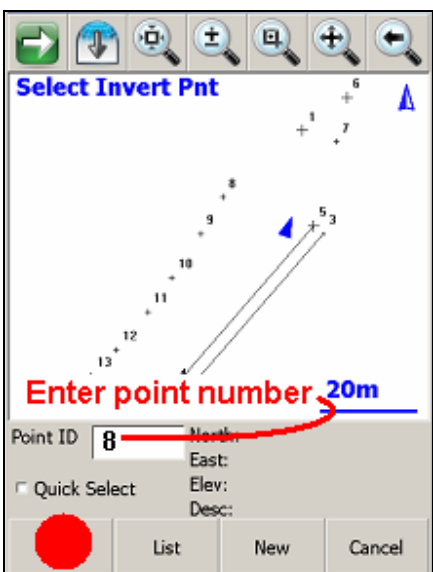
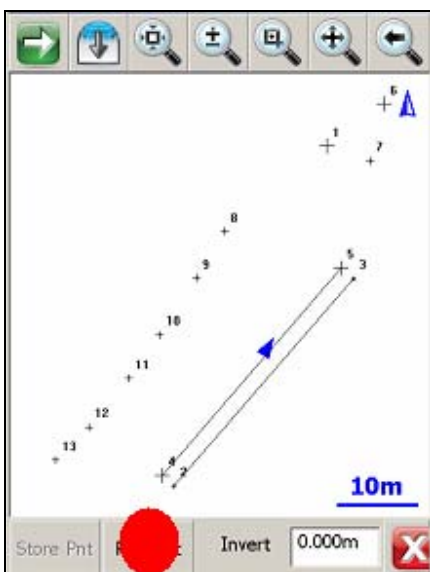
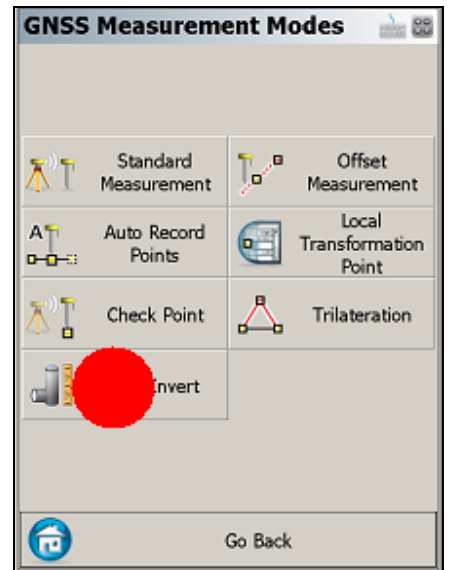
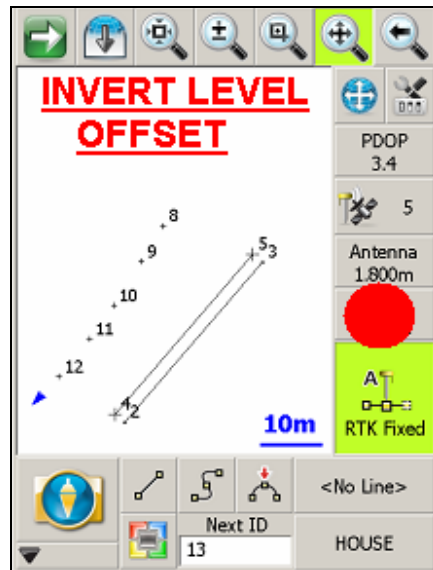
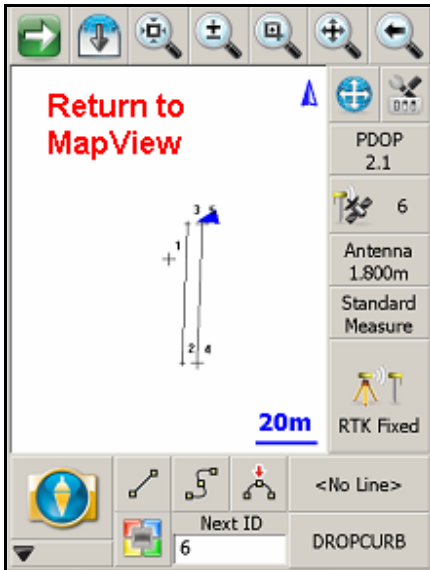
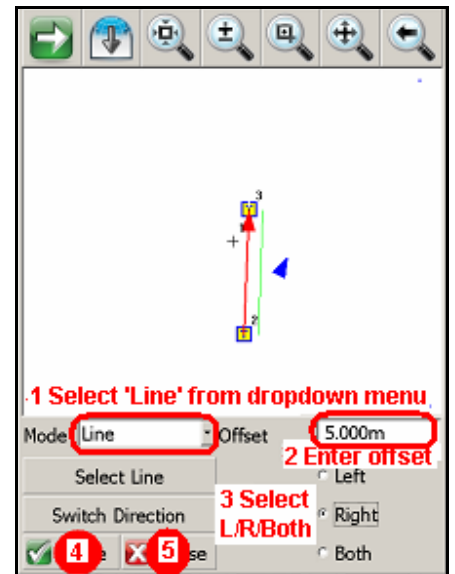
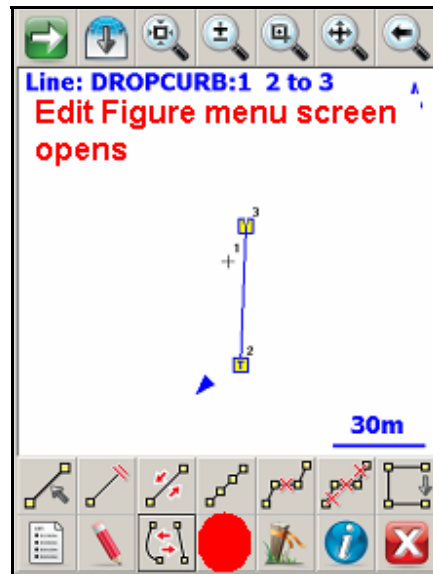
Alternative to selecting feature description from list: Enter your own feature code:



AUTO-RECORDING



OFFSETS



Store Point

Point ID: 14

Description: MH **Enter description**

Northing: 5523081.81m

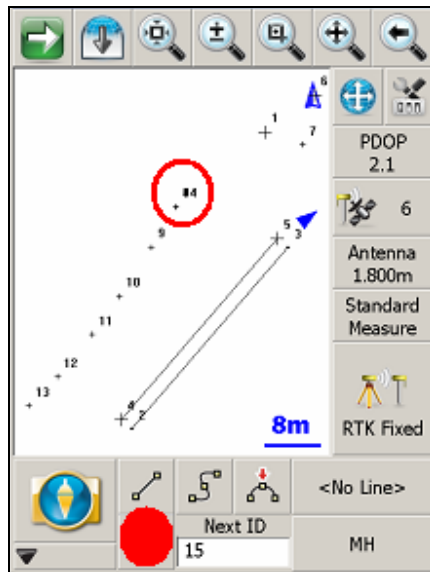
Easting: 311567.168m

Elevation: 380.593m

Note: Tap to enter note

Review Measurement | Advanced | GIS Attributes

Pnt Cancel



Point Database

Point ID	Elevation	Description
3	384.610m	KERB
4	381.472m	
5	384.610m	
6	382.221m	
7	382.123m	HOI
8	381.793m	HOI
9	381.621m	HOI
10	381.407m	HOI
11	381.318m	HOI
12	381.411m	HOI
13	381.441m	HOI
14	380.593m	MH

Two points are logged with 1.2m level difference

Edit | Delete | Add | Find

POINT OFFSET

Map view showing point 6. Distance 6m is indicated. Next ID: 7, <No Desc>

GNSS Measurement Modes

Standard Measurement | Offset Measurement

Auto Record Points | Local Transformation Point

Check Point | Trilateration

Add Invert

Go Back

Trilateration

Observation Baseline

Point 1: [Dbl Click] | Switch Side

Point 2: [Dbl Click] | Save Point | Map View

New Pnt	Pnt 1 Dist	Pnt 2 Dist	S

Measure From Pnt1 | Measure From Pnt2 | Close

Add Trilateration Point

Point ID: 7

Description: No Desc

Baseline Side: Left Right

Enter the Point ID of the new point and a description

Cancel

Trilateration

Observation Baseline

Point 1: [Redacted] | Add Point | Switch Side

Point 2: [Dbl Click] | Save Point | Map View

New Pnt	Pnt 1 Dist	Pnt 2 Dist	S

Measure From Pnt1 | Measure From Pnt2 | Close

Trilateration

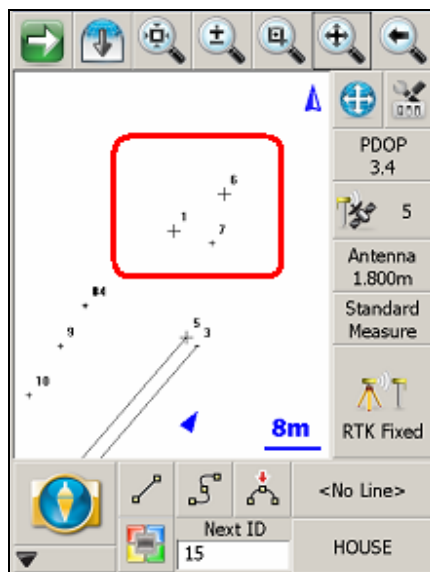
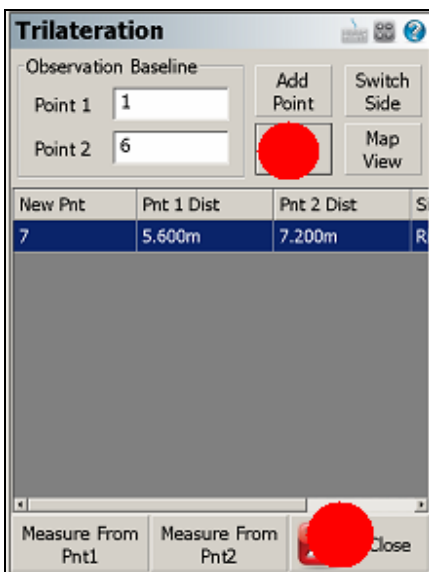
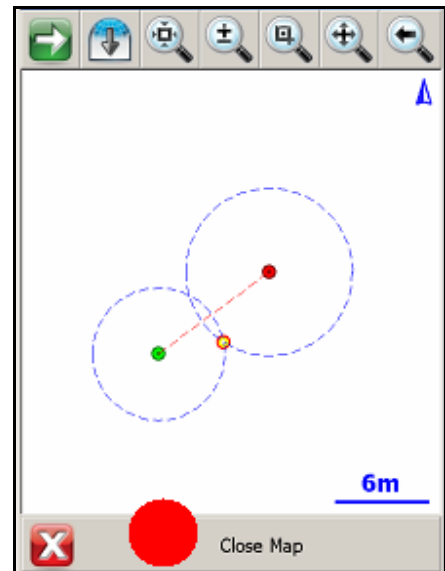
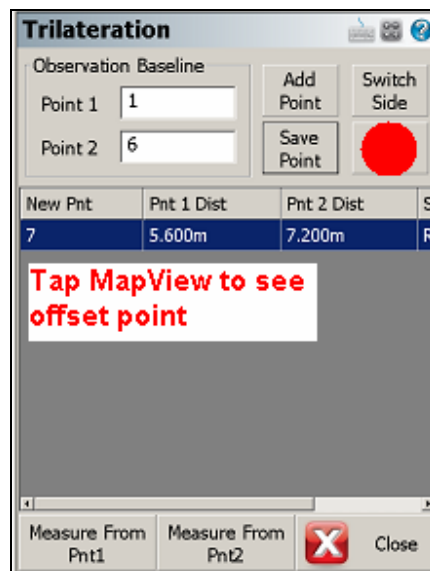
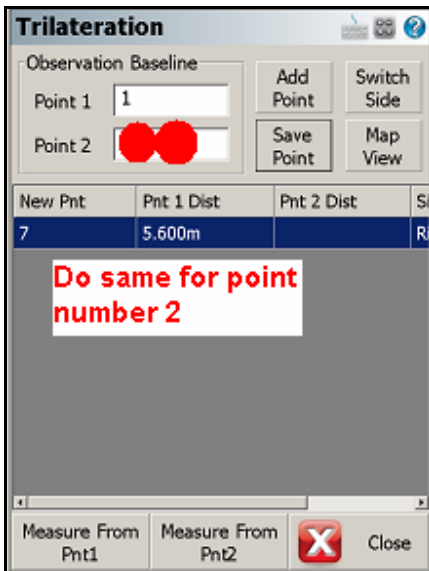
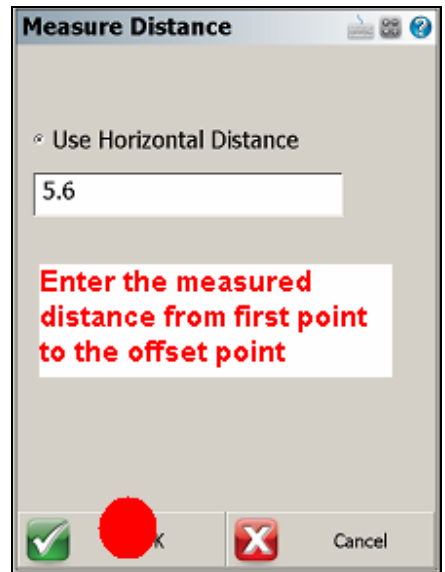
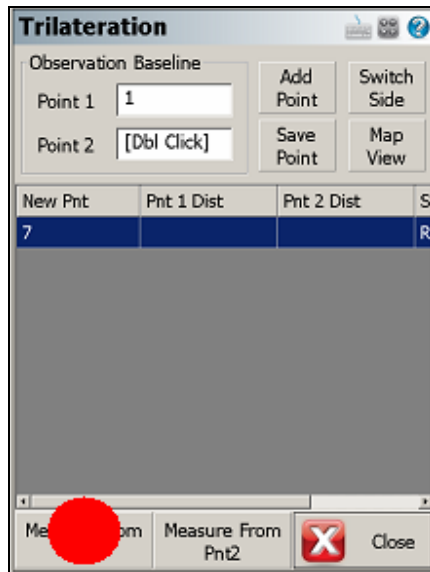
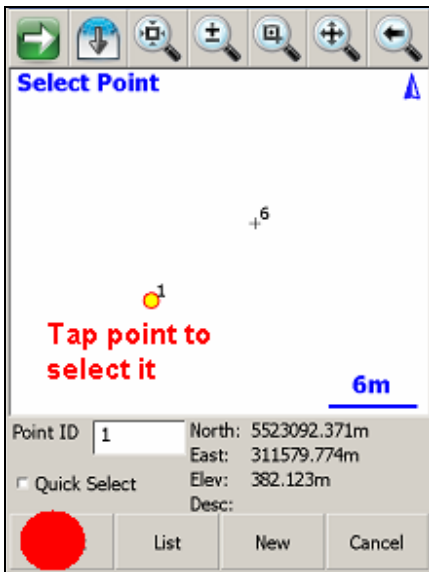
Observation Baseline

Point 1: [Redacted] | Add Point | Switch Side

Point 2: Key Pad Entry | Point Select - Map | Point Select - List | Point Select - New

New Pnt	Pnt 1 Dist	Pnt 2 Dist	S
7			

Measure From Pnt1 | Measure From Pnt2 | Close



DOWNLOADING

