

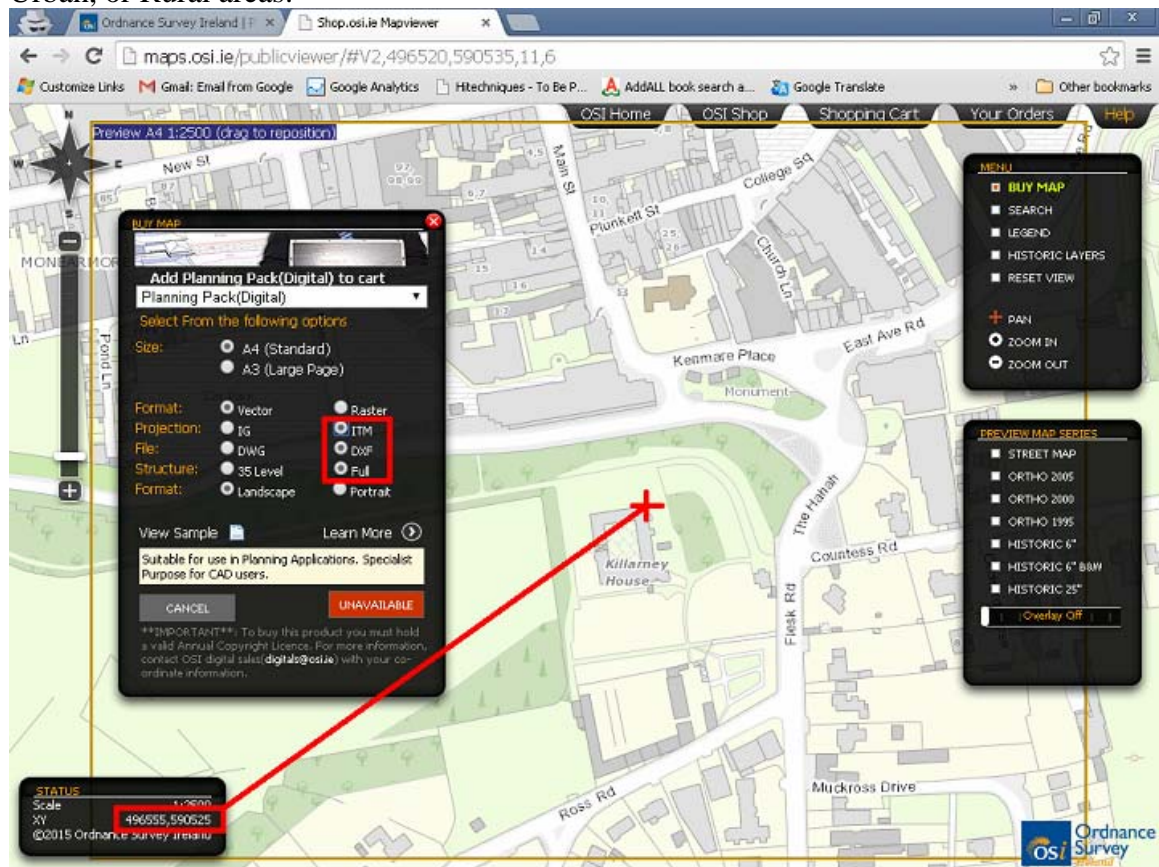
# USING THE OSI PLANNING PACK WITH GEOMAX GPS ROVER – PART 1

Ordnance Survey Ireland (OSI) produce two types of planning packs that can be used to prepare a planning application:

- Planning Pack (Digital)
- Planning Pack (Printable)

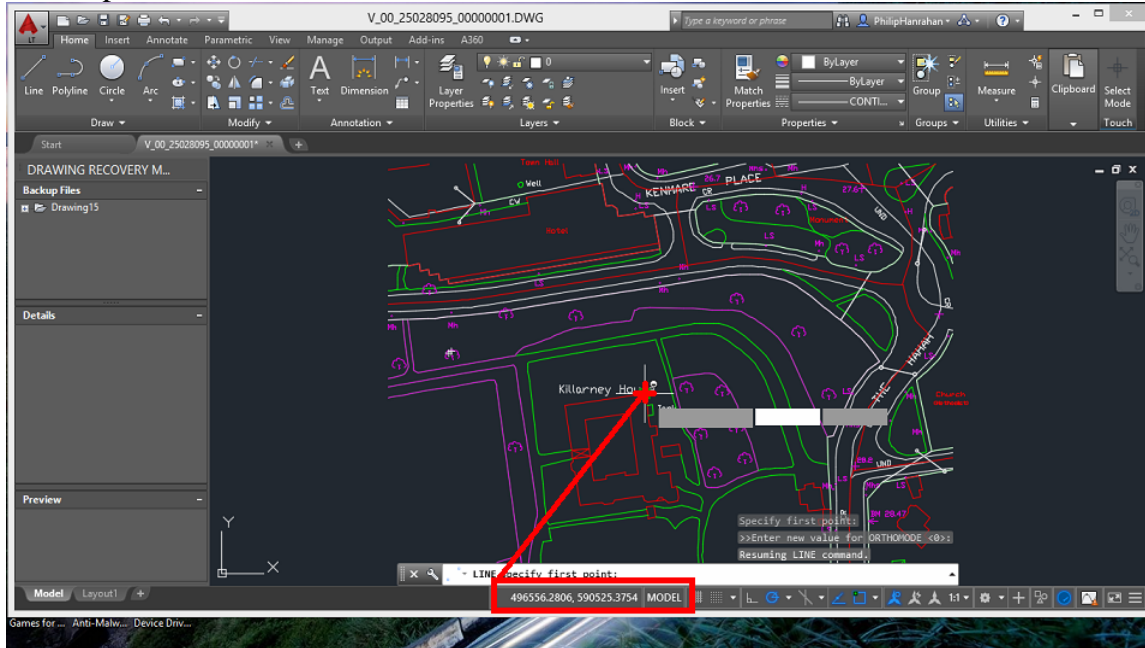
Today we are going to look at the how the former (Planning Pack Digital) can be used easily to verify the OSI planning map with the ground conditions and also how the map when used as a site layout can be uploaded to the Geomax Zenith20 Rover to quickly set out a design on the site.

OSI make purchase of the Planning Pack Digital easy, just go to the [OSI website](#) and select the area that you want on the Ireland map. The scale automatically adjusts for Urban, Peri-Urban, or Rural areas:



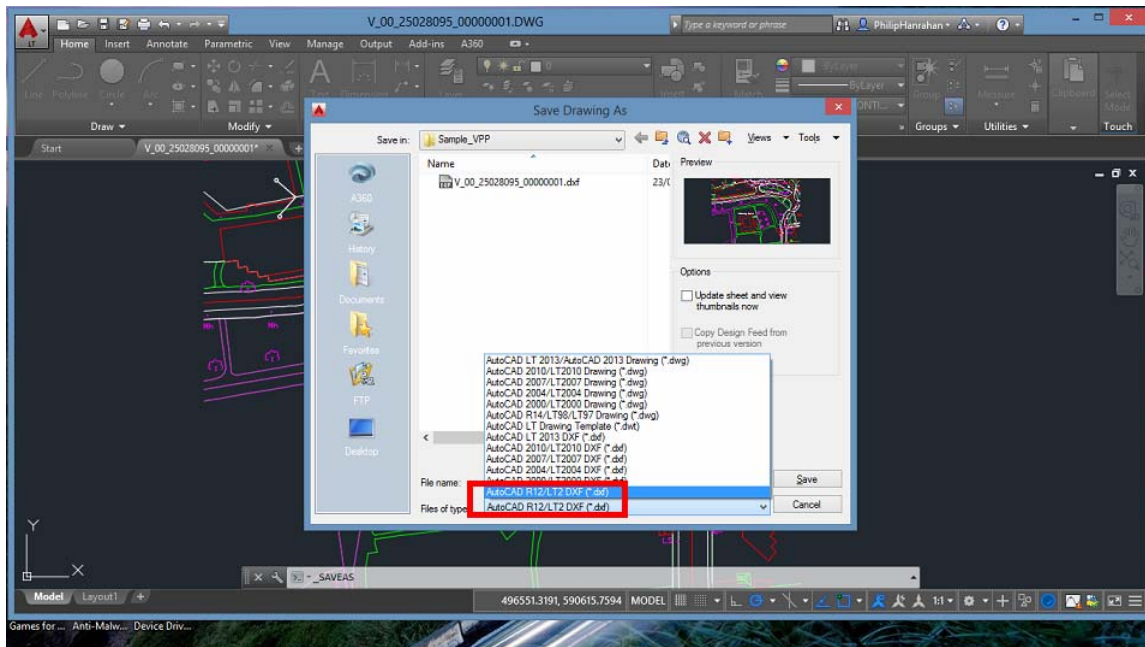
Make sure to select ITM as the Projection and .dxf as the output. When you select ITM as the projection the co-ordinates of the map centre will show in the bottom left hand corner, (should be greater than 490 000, 500 000). This is will ensure that you are in the correct co-ordinate system when you use the GPS Rover.

When you load the map file into Autocad you will again see that the co-ordinates are in the correct place:

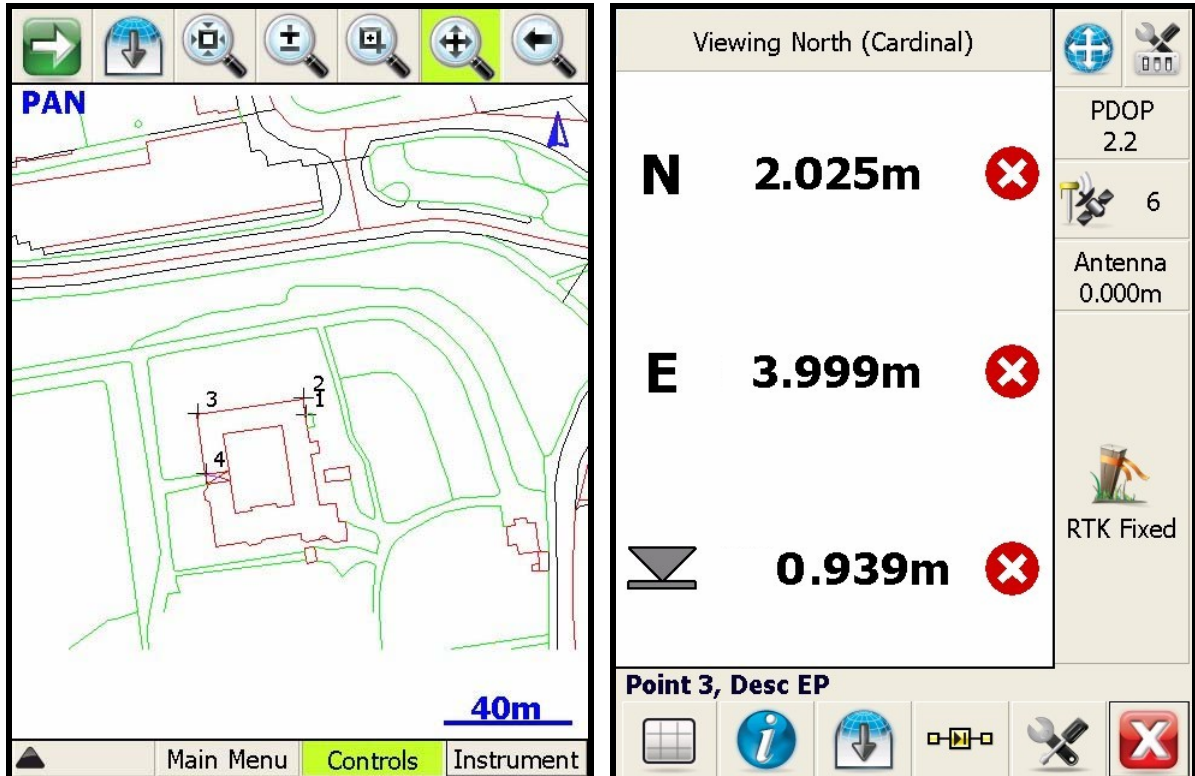


You can add your design (building, house, etc.) to the map locating it in the correct position with regard to existing buildings and boundaries.

To check existing boundaries and set out the site or building File>Save As a .dxf of file type **Autocad R12/LT2**



After loading to the datalogger (see pages 4 & 5, [here](#)) you will see the drawing and map on screen:



**1 day FREE hire**  
**Geomax Zenith20 GPS Rover**  
**Value: €75+VAT**

Delivery/Collection not included. Applies to first time customers only

Click [HERE](#)

[How Surveying GPS Works](#)  
[GPS Rover vs Total Stations – Pros & Cons](#)  
[Using surveying GPS near buildings & trees](#)