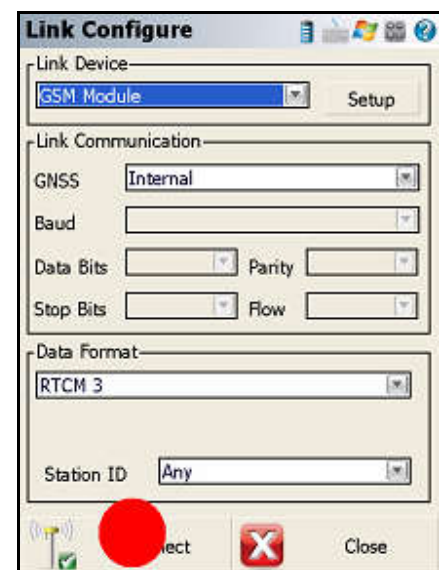
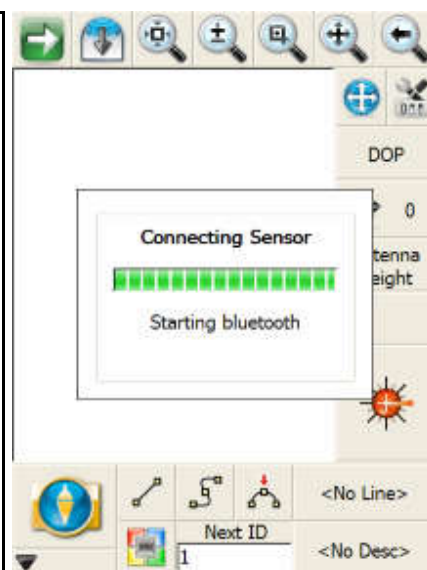
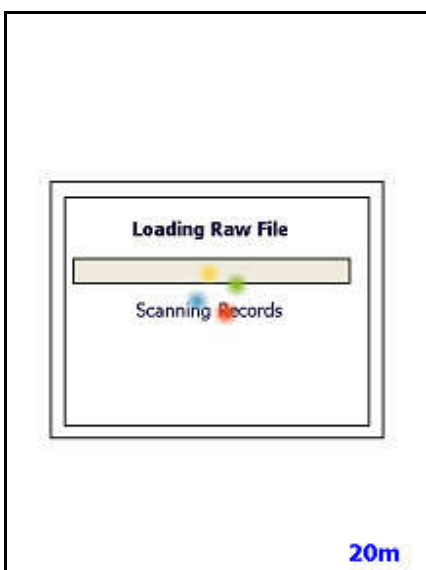
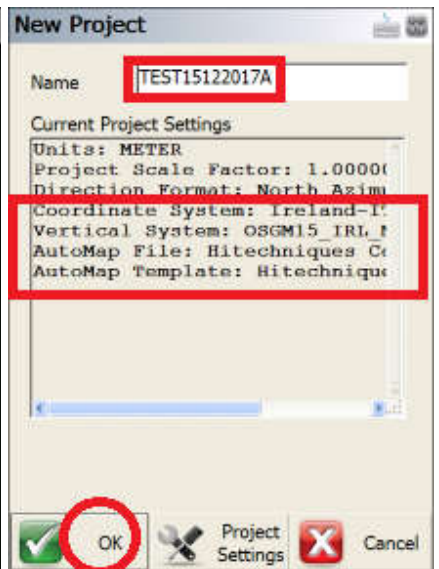
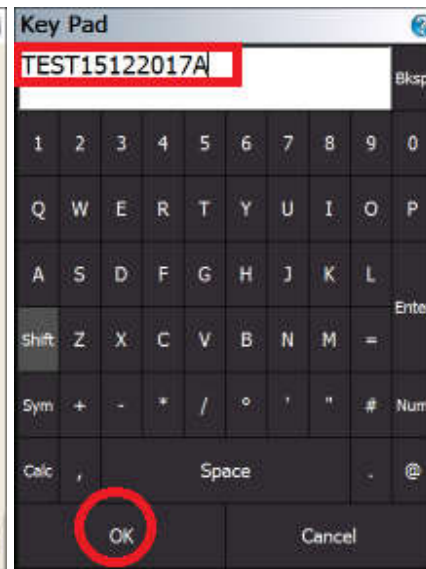
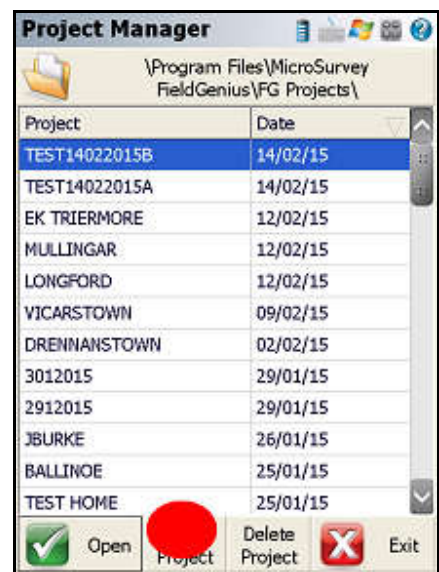
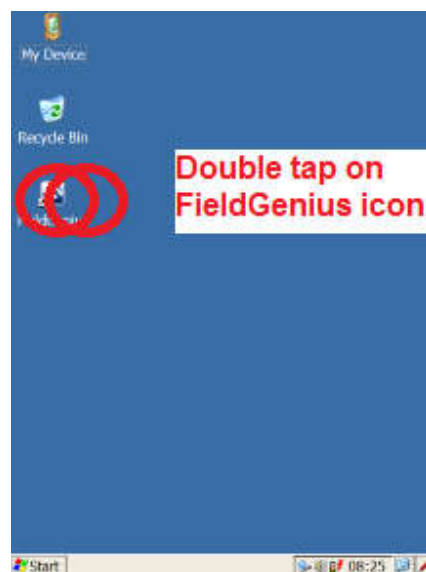
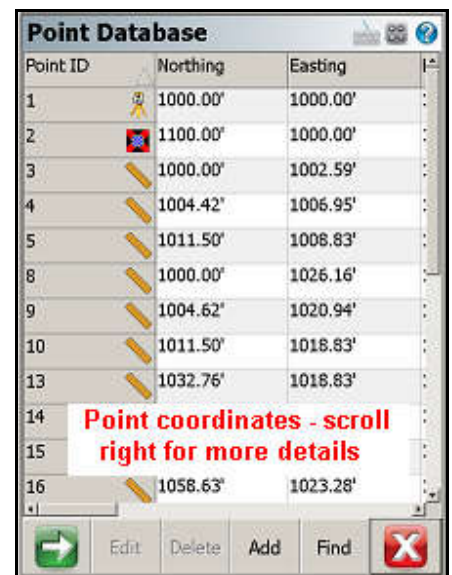
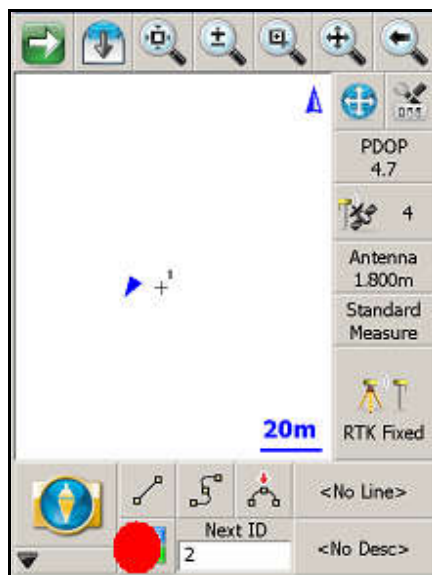
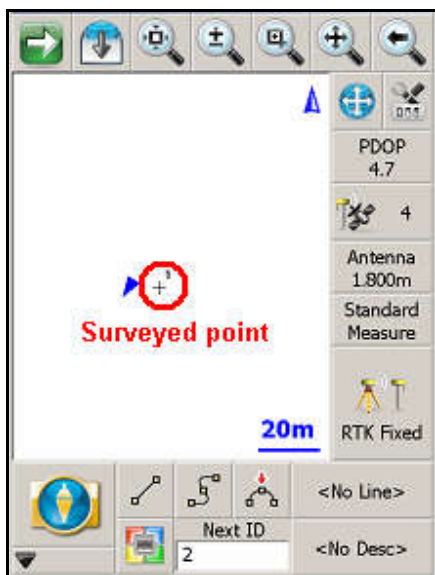
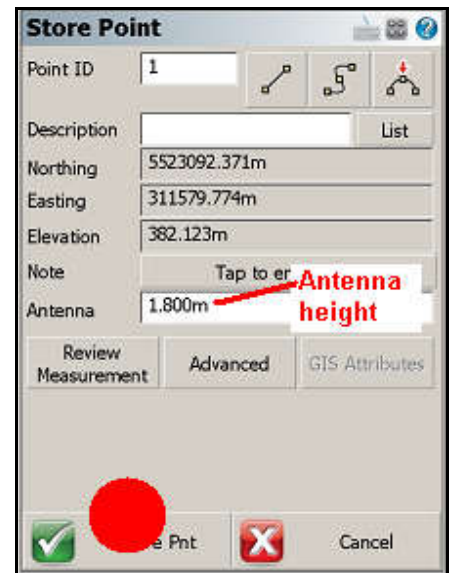
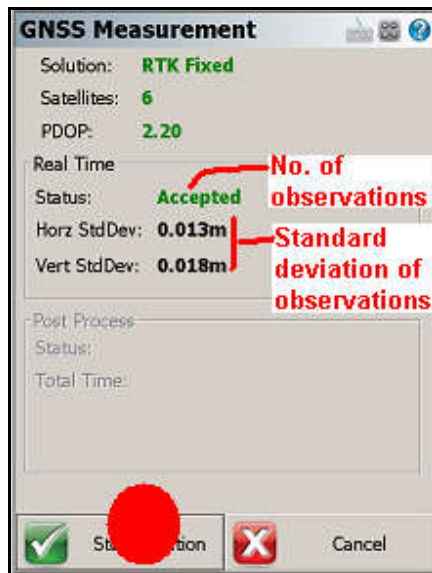
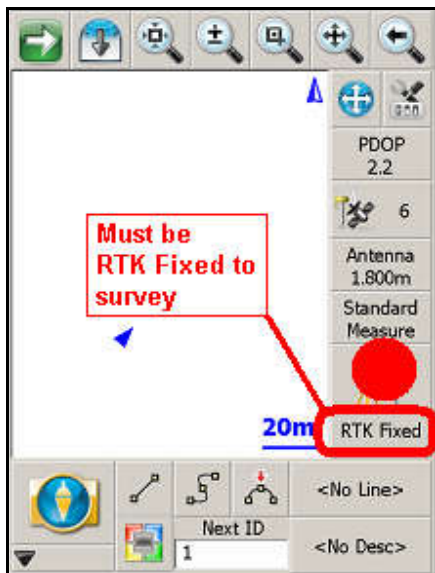
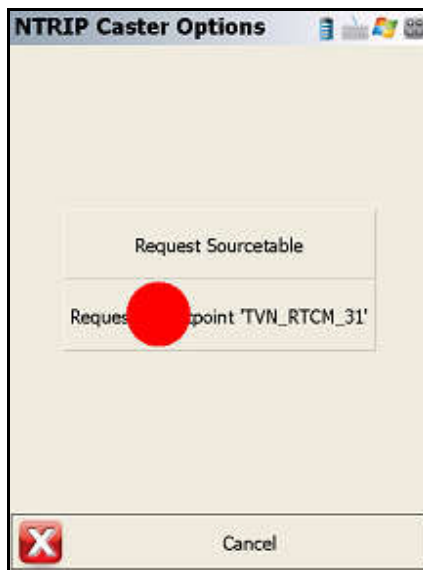
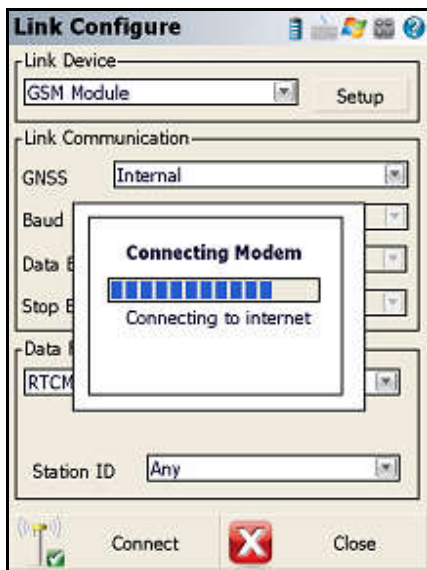
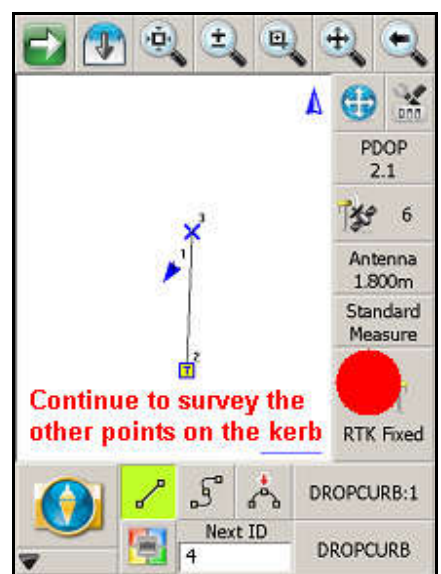
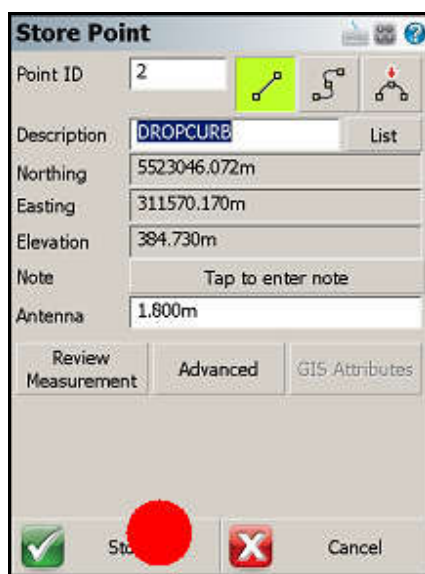
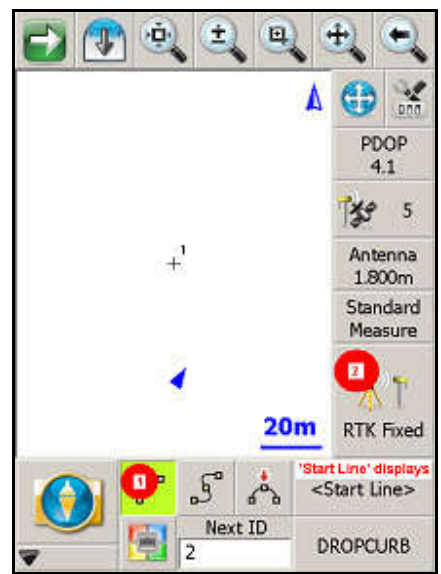
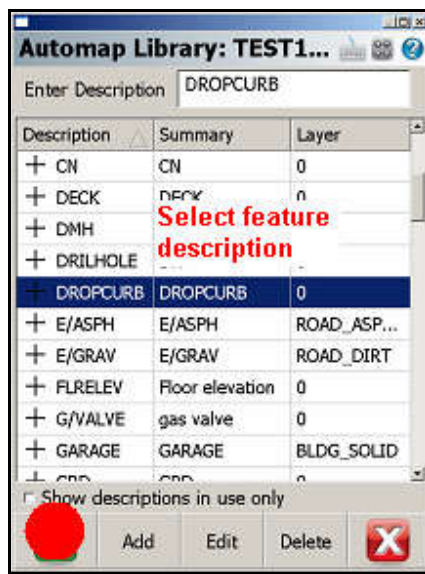
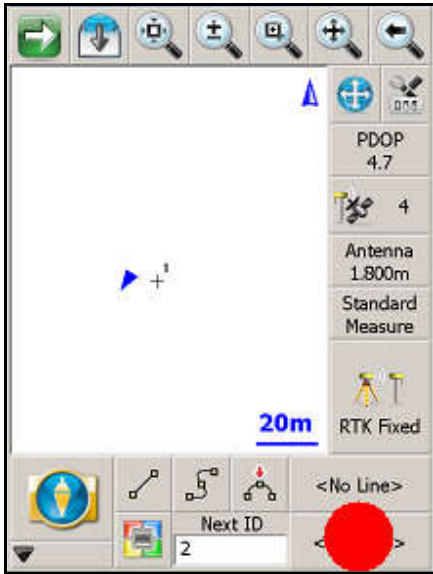


HOW TO SURVEY WITH M8 & FG8 – V2.0

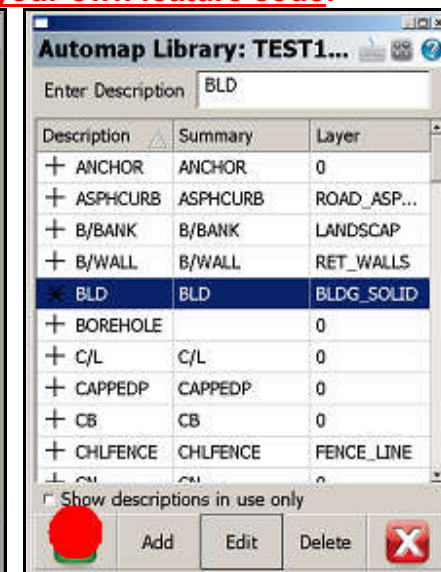
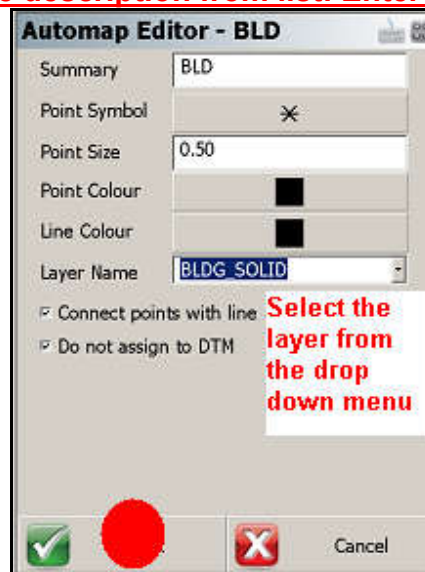
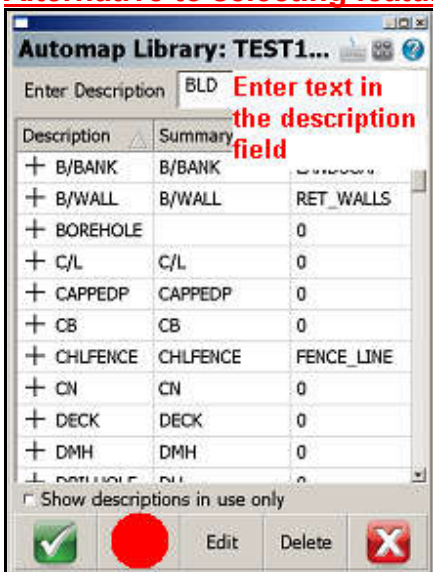




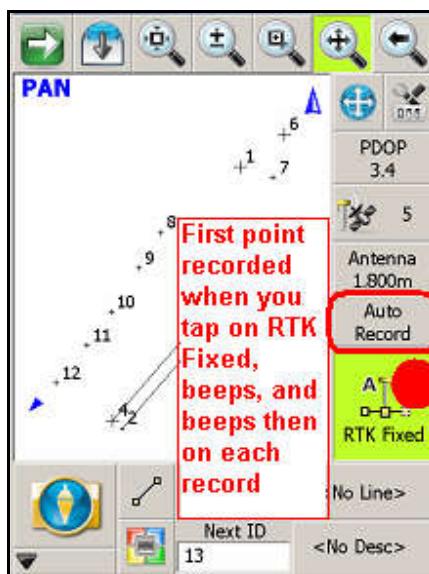
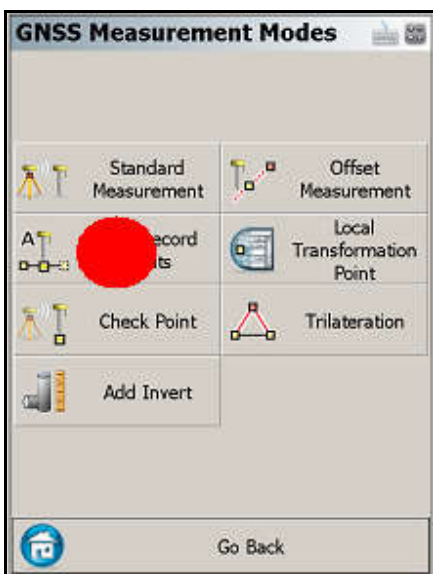
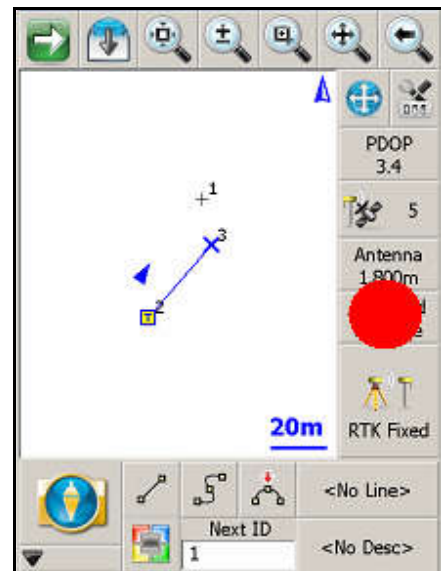
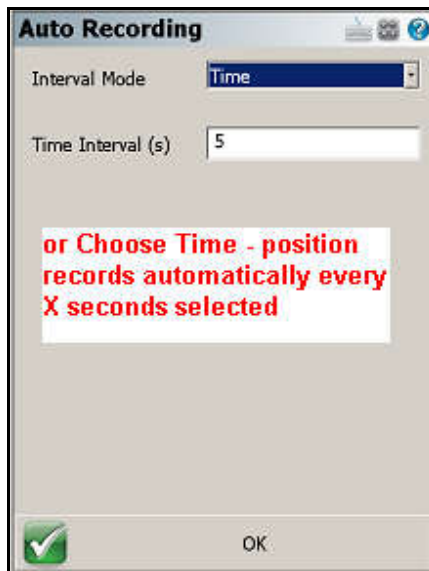
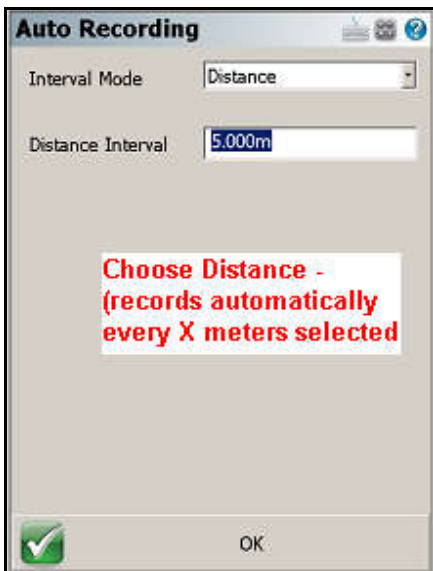
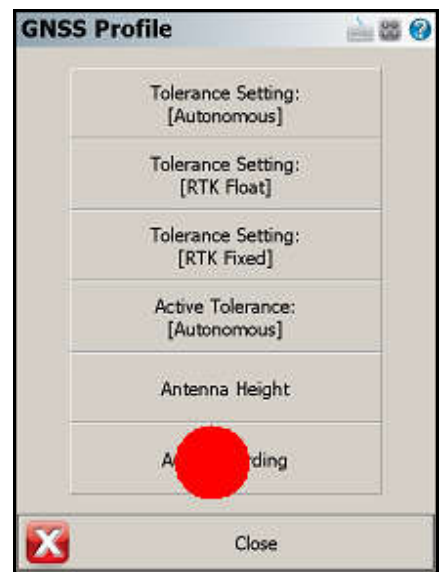
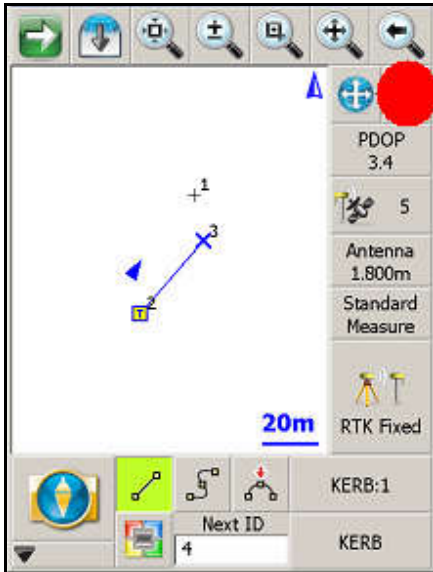
SURVEYING LINES & FEATURES



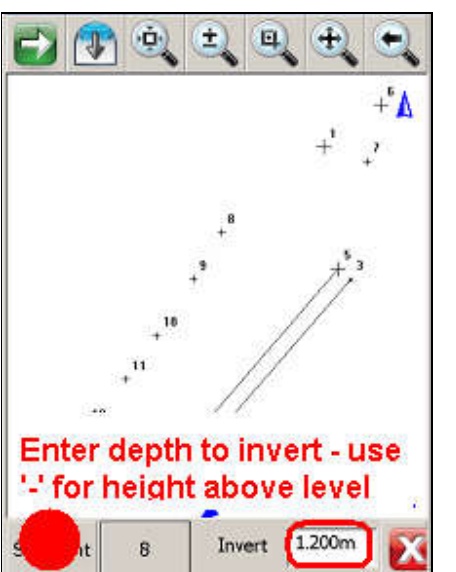
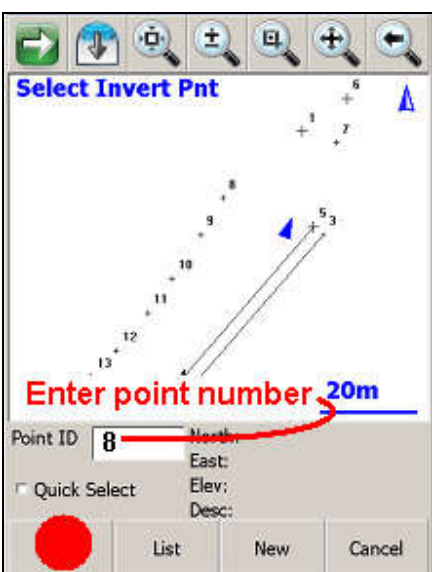
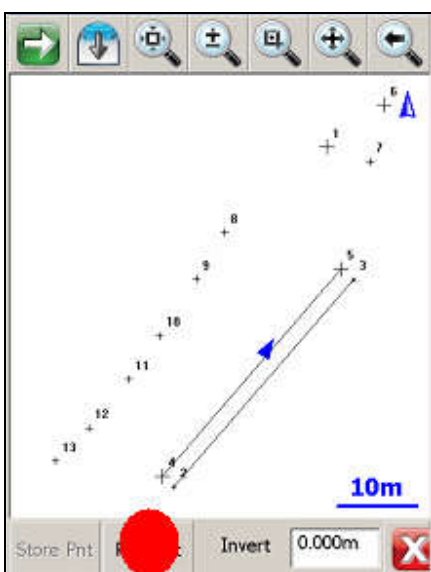
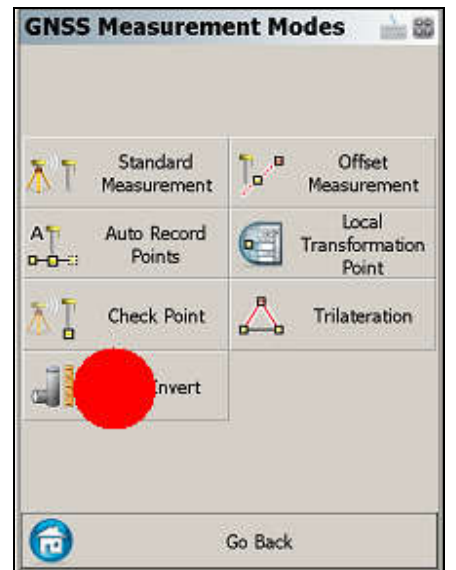
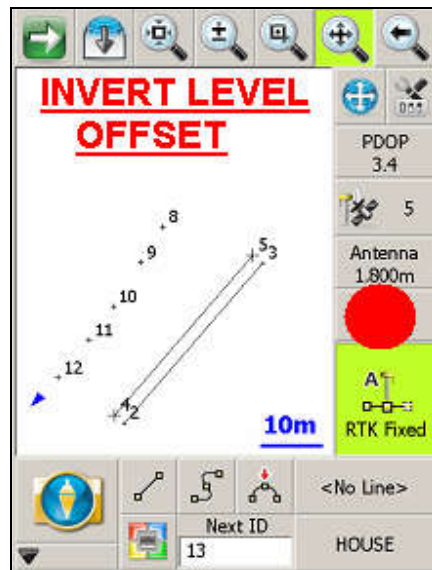
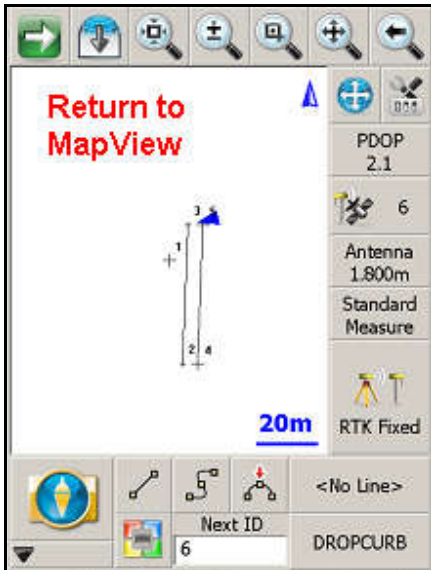
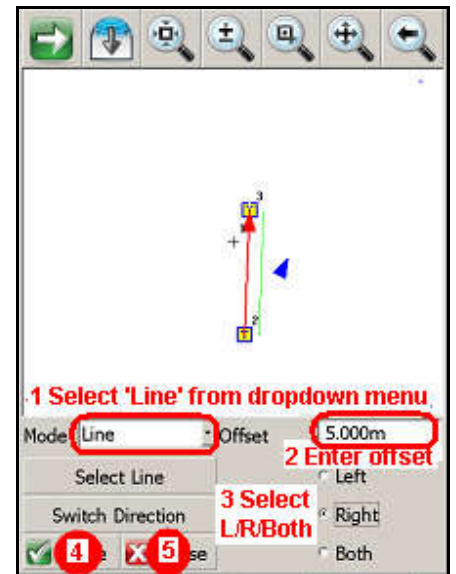
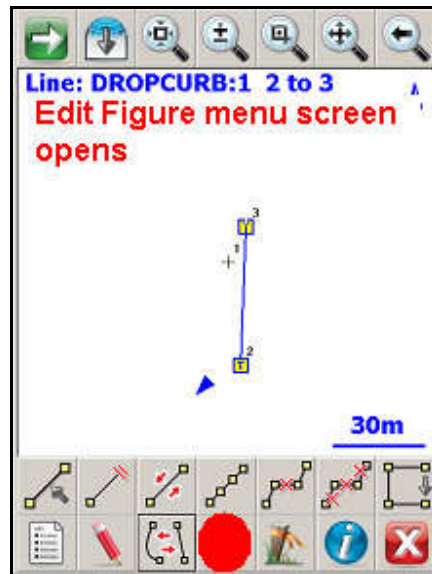
Alternative to selecting feature description from list: Enter your own feature code:



AUTO-RECORDING



OFFSETS



Store Point

Point ID: 14

Description: MH **Enter description**

Northing: 5523081.81m

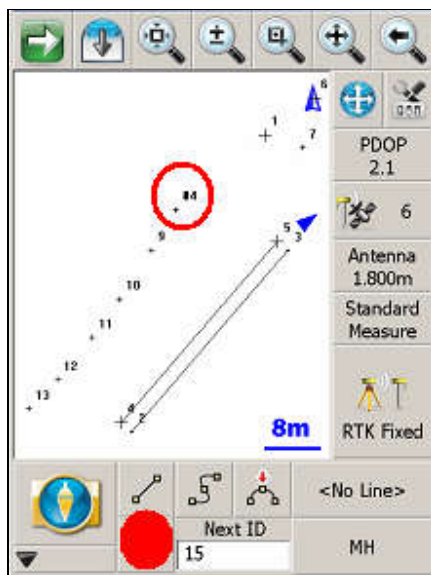
Easting: 311567.168m

Elevation: 380.593m

Note: Tap to enter note

Review Measurement | Advanced | GIS Attributes

Pnt Cancel

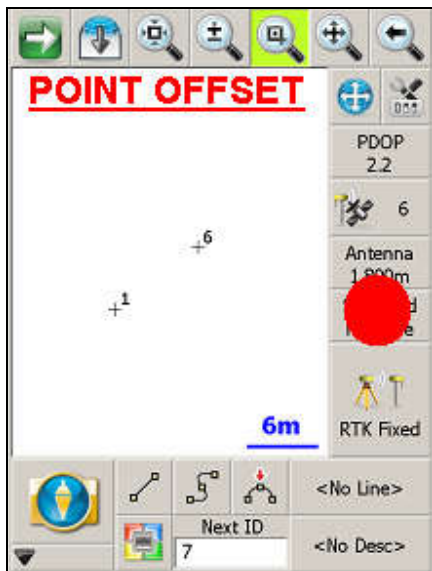


Point Database

Point ID	Elevation	Description
3	384.610m	KERB
4	381.472m	
5	384.610m	
6	382.221m	
7	382.123m	HOI
8	381.793m	HOI
9	381.621m	HOI
10	381.407m	HOI
11	381.318m	HOI
12	381.411m	HOI
13	381.441m	HOI
14	380.593m	MH

Two points are logged with 1.2m level difference

Edit | Delete | Add | Find



GNSS Measurement Modes

- Standard Measurement
- Offset Measurement
- Auto Record Points
- Local Transformation Point
- Check Point
- Trilateration
- Add Invert

Go Back

Trilateration

Observation Baseline

Point 1: [Dbl Click] Switch Side

Point 2: [Dbl Click] Save Point | Map View

New Pnt	Pnt 1 Dist	Pnt 2 Dist	S

Measure From Pnt1 | Measure From Pnt2 | Close

Add Trilateration Point

Point ID: 7

Description: No Desc

Baseline Side: Left Right

Enter the Point ID of the new point and a description

Cancel

Trilateration

Observation Baseline

Point 1: Add Point | Switch Side

Point 2: [Dbl Click] Save Point | Map View

New Pnt	Pnt 1 Dist	Pnt 2 Dist	S

Measure From Pnt1 | Measure From Pnt2 | Close

Trilateration

Observation Baseline

Point 1: Add Point | Switch Side

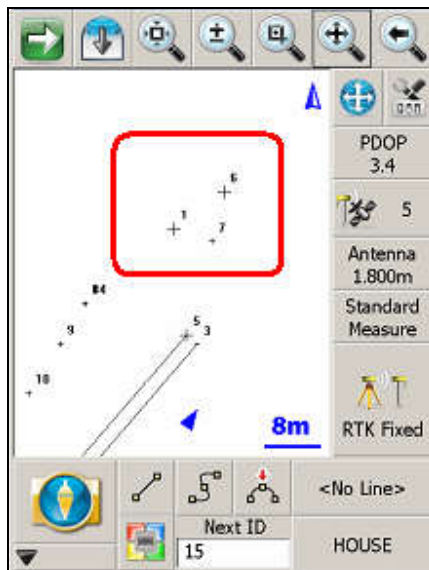
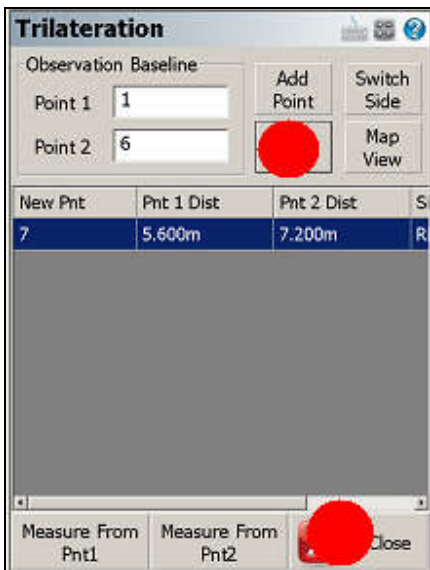
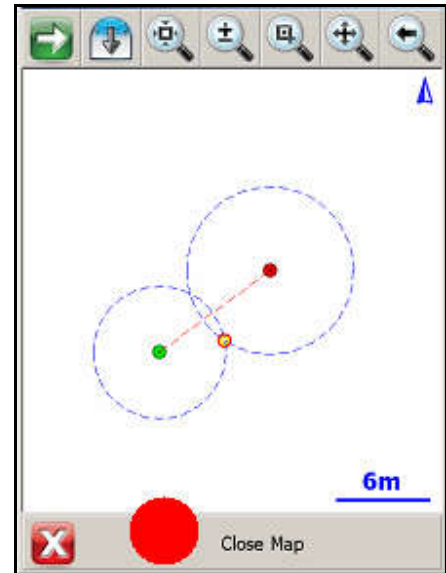
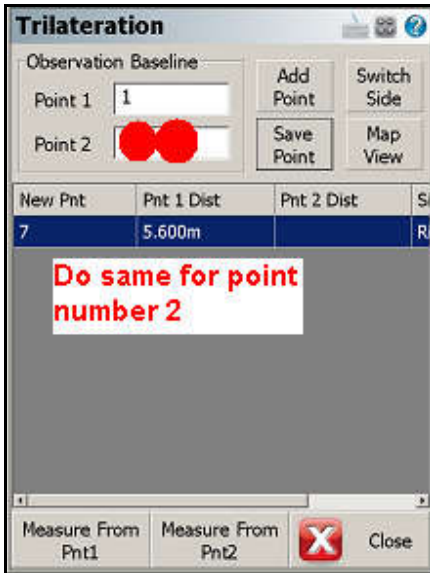
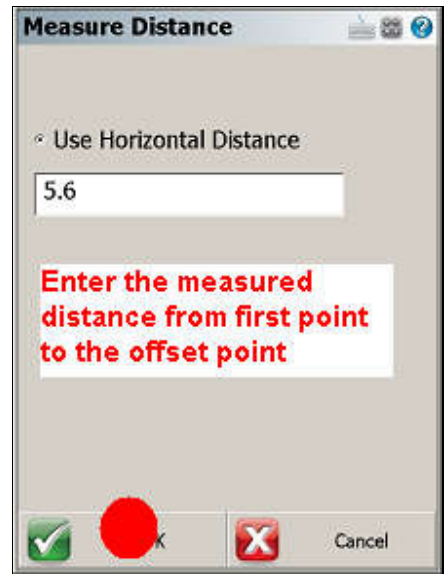
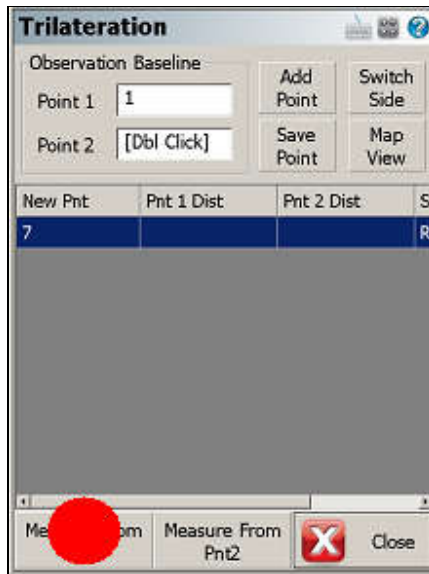
Point 2: Key Pad Entry | Map View

Point Select - List

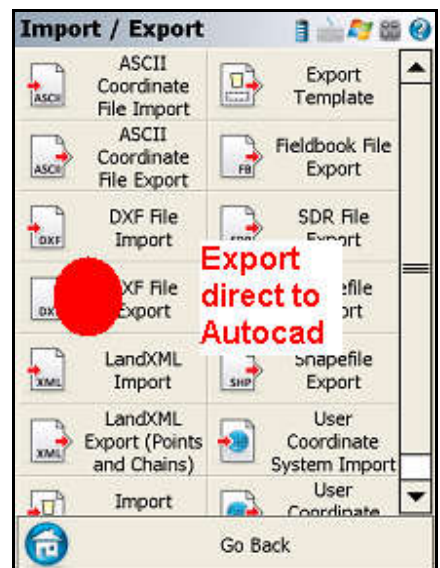
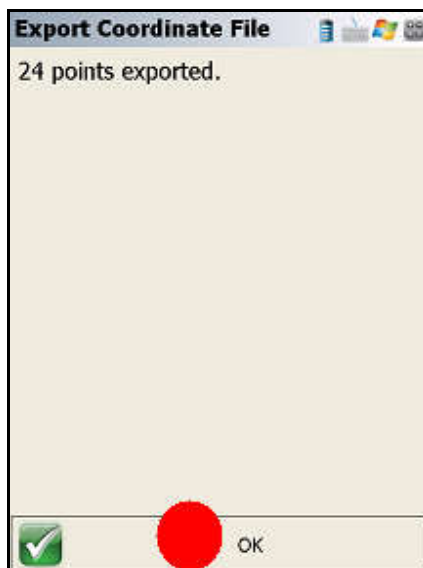
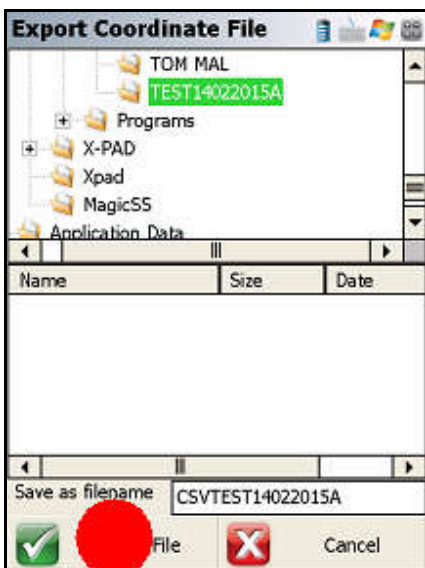
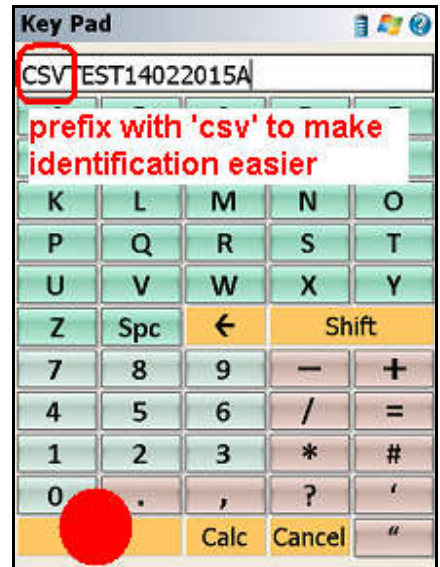
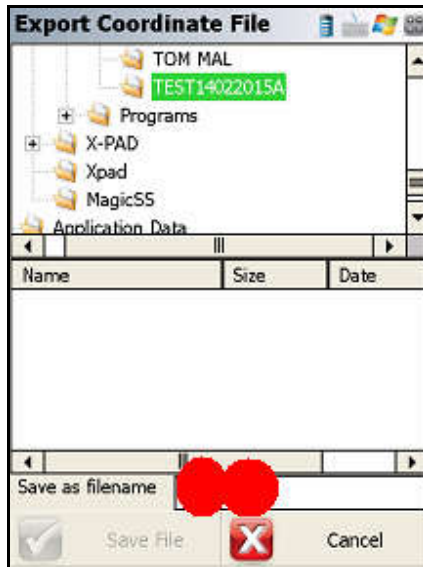
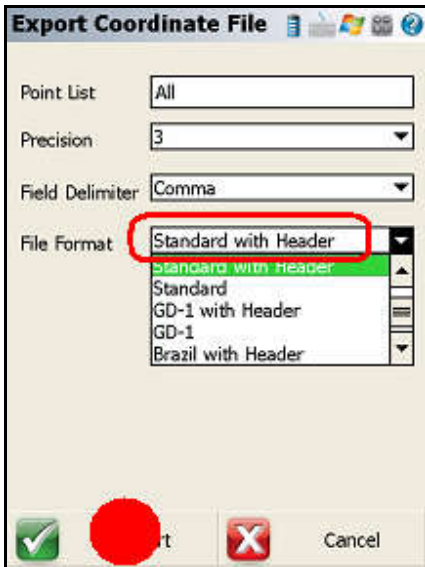
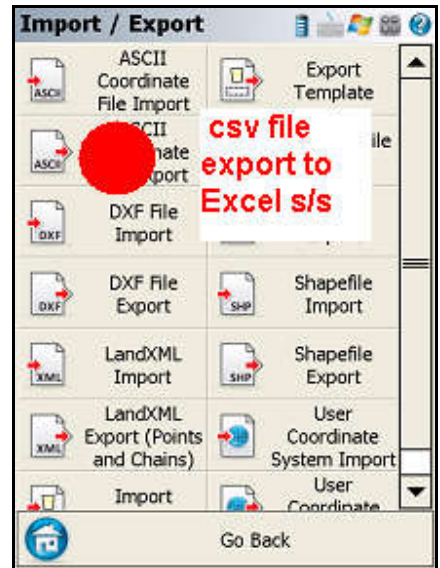
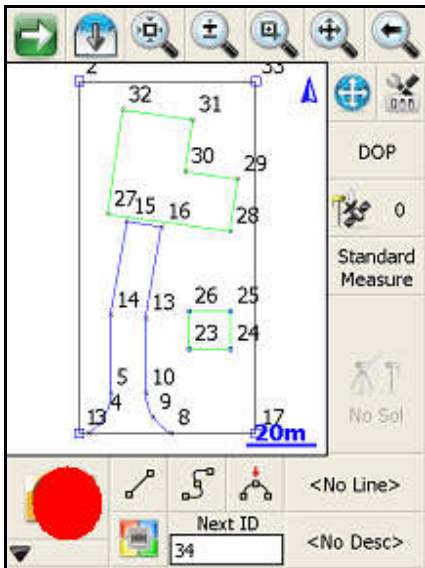
Point Select - New

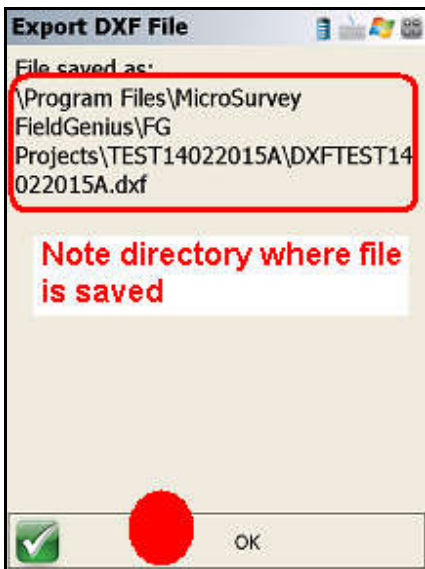
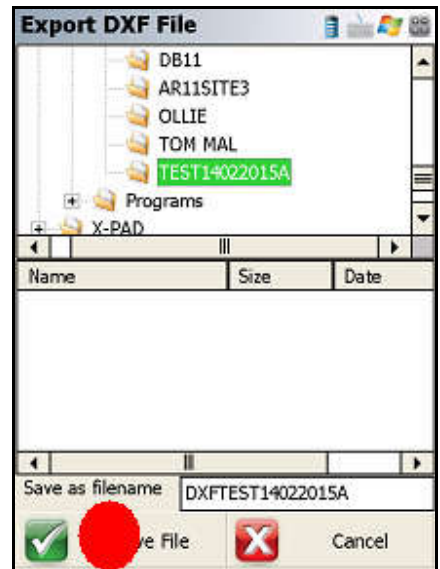
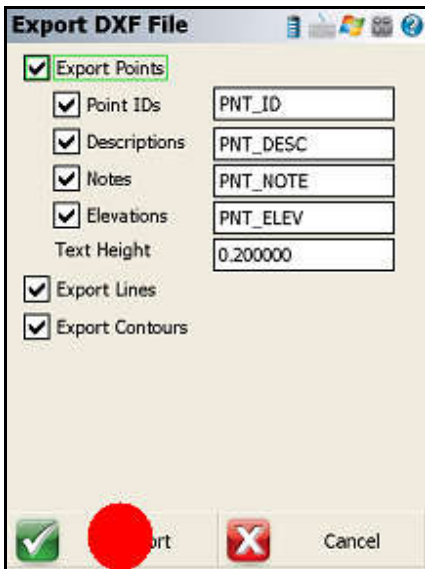
New Pnt	Pnt 1 Dist	Pnt 2 Dist	S
7			R

Measure From Pnt1 | Measure From Pnt2 | Close



DOWNLOADING





PC Connection

Windows Vista or earlier:
Must have ActiveSync installed, download free from Microsoft

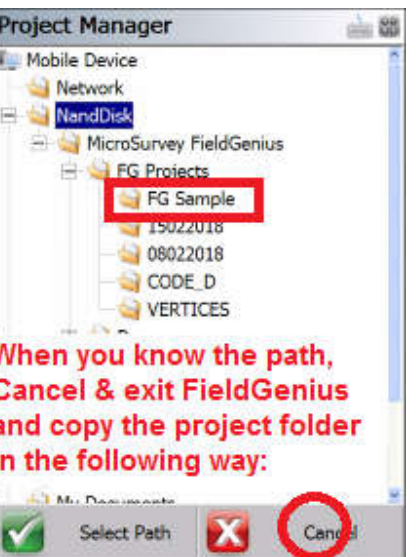
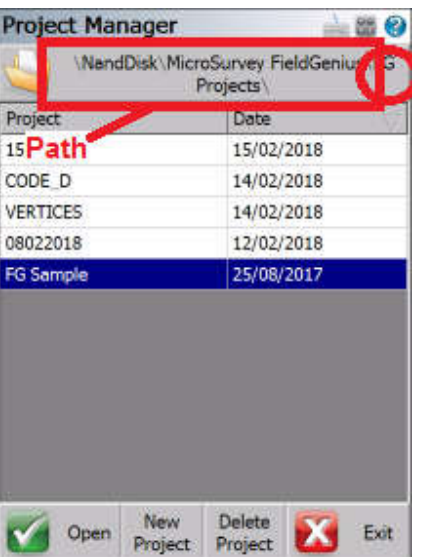
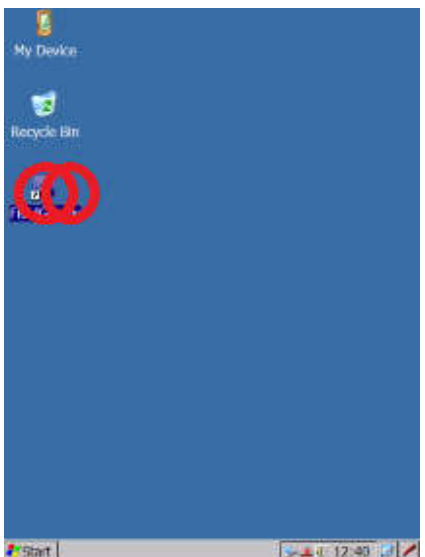
Win7 or later:
Must have Windows Mobile Device Centre (not Windows Mobility, not Windows Media Centre) installed. Download free from Microsoft

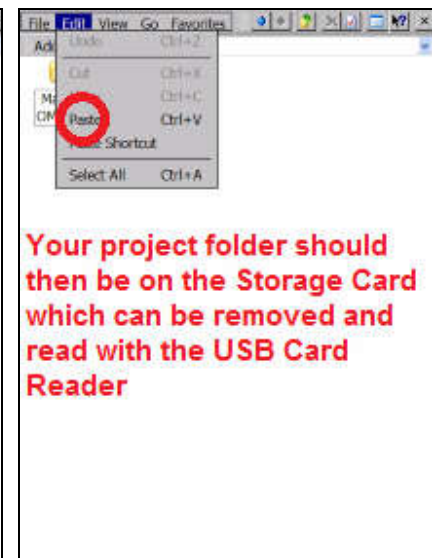
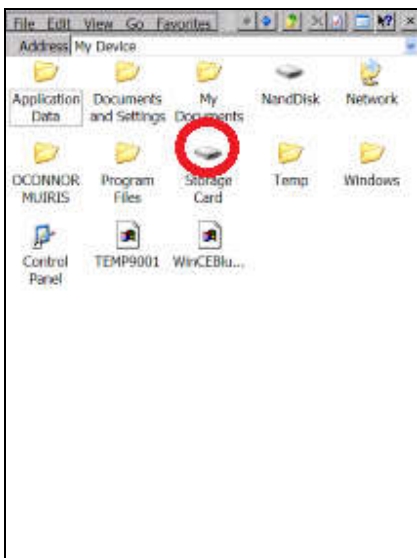
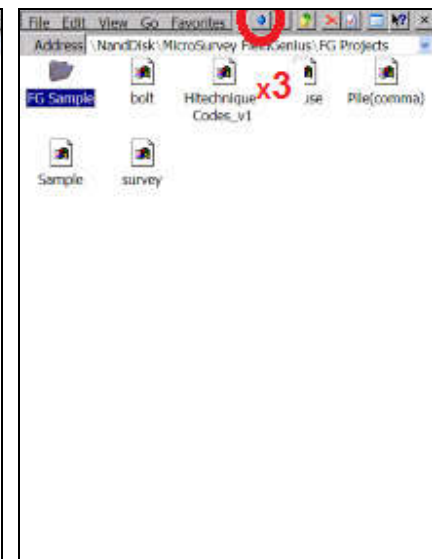
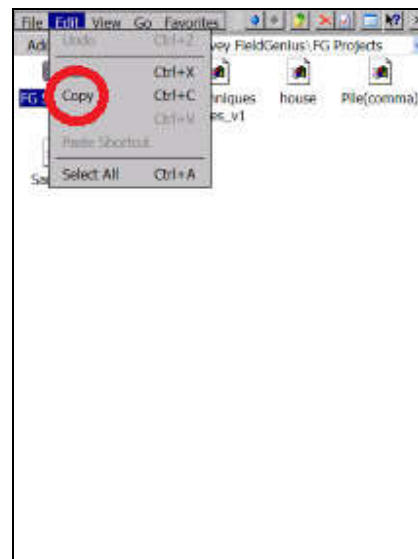
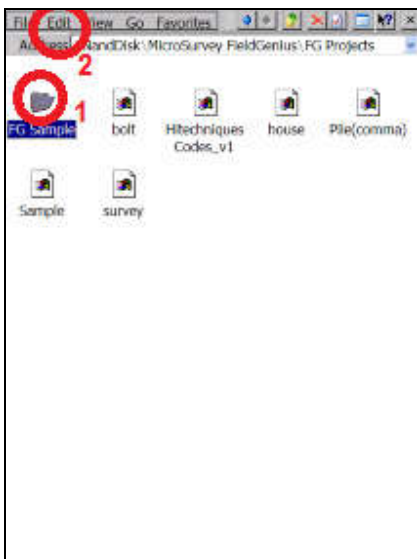
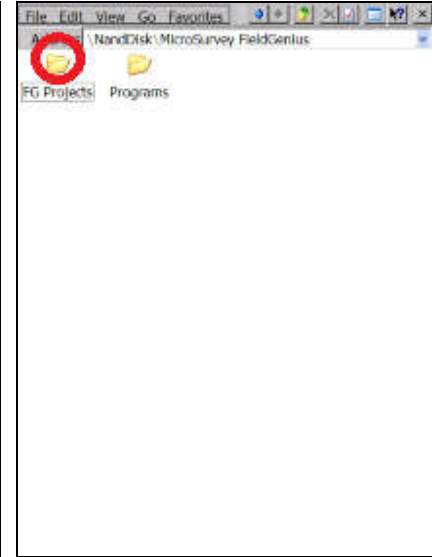
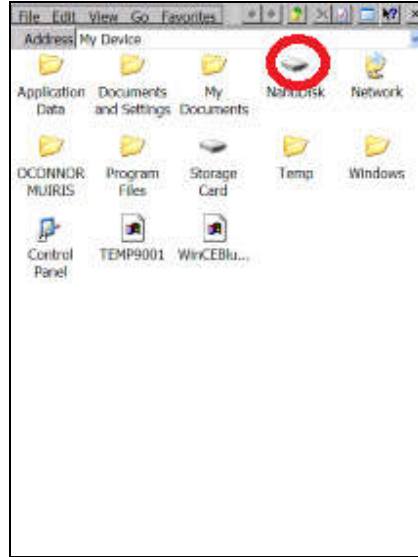
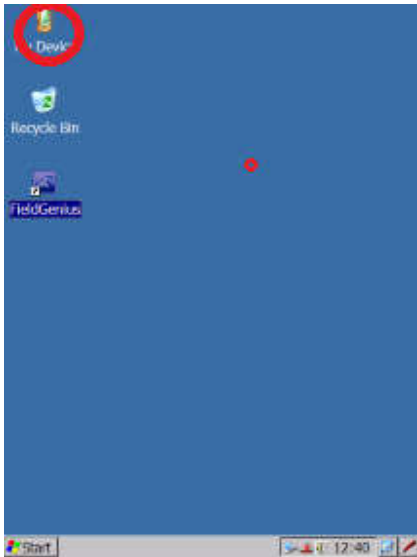
When connected to your PC use Windows Explorer (of File Manager) to copy the complete project folder from the Mobile Device to your PC

Alternatively

You can copy the folder to the Storage Card and use the USB Card Reader supplied to transfer the project file to your PC

First, check the path to your project file in the following way





Your project folder should then be on the Storage Card which can be removed and read with the USB Card Reader