



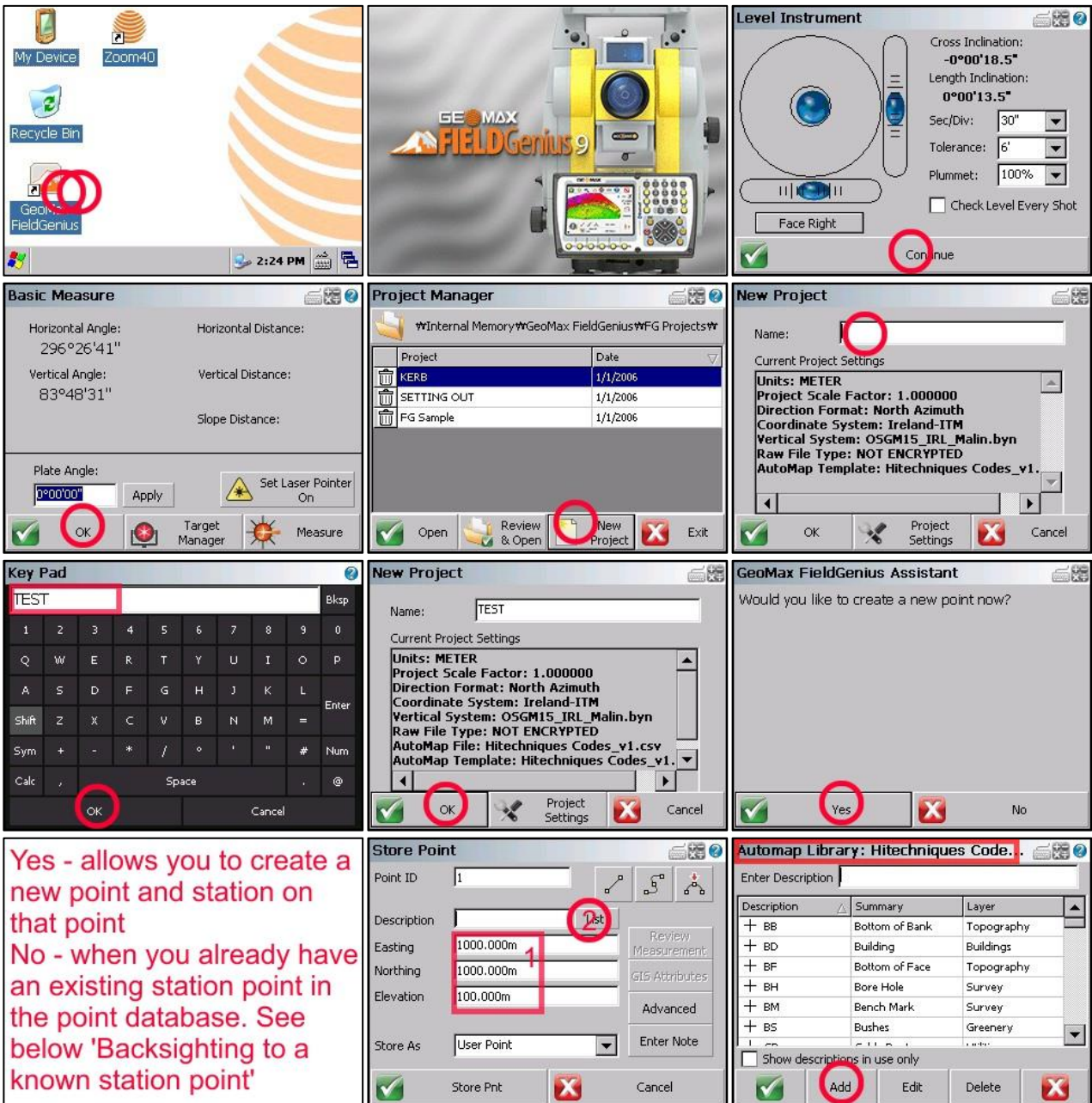


Using ZIPP20/ZOOM40 & Field Genius (V 9.3.24.0)

How to read Quick Sheet

-  Tap
-  Double tap
-  Tap & hold
-  Input or Pay Attention

How to start



Basic Measure

Horizontal Angle: 296°26'41"
 Horizontal Distance:
 Vertical Angle: 83°48'31"
 Vertical Distance:
 Slope Distance:

Plate Angle: 0°00'00"

Project Manager

Project	Date
KERB	1/1/2006
SETTING OUT	1/1/2006
FG Sample	1/1/2006

New Project

Name:

Current Project Settings

- Units: METER
- Project Scale Factor: 1.000000
- Direction Format: North Azimuth
- Coordinate System: Ireland-ITM
- Vertical System: OSGM15_IRL_Malin.byn
- Raw File Type: NOT ENCRYPTED
- AutoMap Template: Hitechniques Codes_v1.

Key Pad

TEST

GeoMax FieldGenius Assistant

Would you like to create a new point now?

Store Point

Point ID: 1

Description:



Easting: 1000.000m
 Northing: 1000.000m
 Elevation: 100.000m

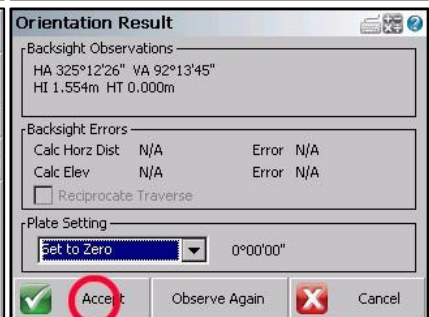
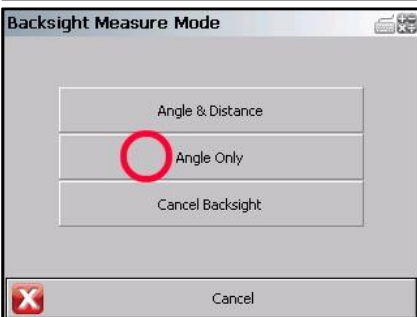
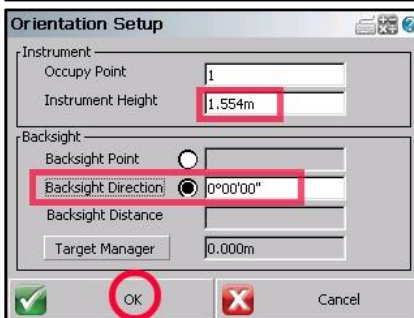
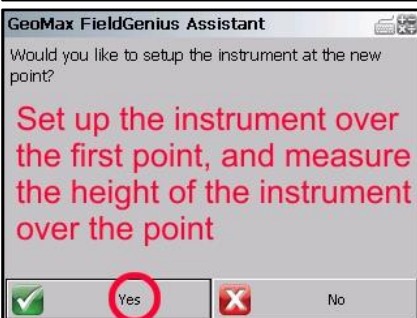
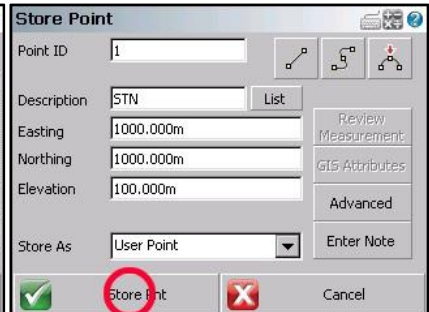
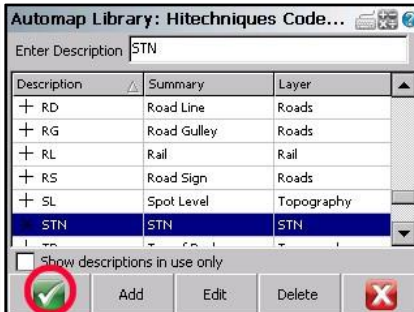
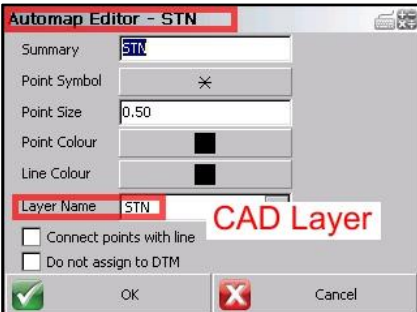
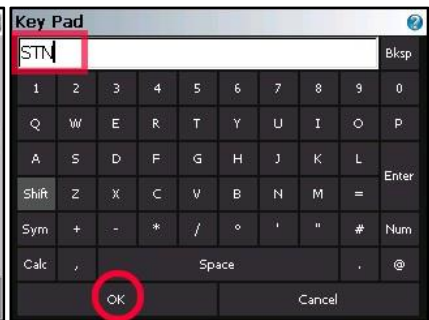
Store As: User Point

Automap Library: Hitechniques Code...

Description	Summary	Layer
+ BB	Bottom of Bank	Topography
+ BD	Building	Buildings
+ BF	Bottom of Face	Topography
+ BH	Bore Hole	Survey
+ BM	Bench Mark	Survey
+ BS	Bushes	Greenery

Yes - allows you to create a new point and station on that point
 No - when you already have an existing station point in the point database. See below 'Backsighting to a known station point'

You can select code from existing library by tapping on it and  or  Add a feature



Stationing & orientation of the instrument is now complete and you are ready to start surveying

Using Target Manager

Target manager allows you to change prism type and target height

Use Target Manager to switch between Reflectorless and Prism measurement

Change Target Height for prism measurement

Note difference between Backsight and Foresight. Reflectorless target height is always 0. Remember about proper target height for Prism Measurement. For the mini prism included in carrying case use Circular Prism

Surveying lines and features

MAP VIEW

Automap Library: Hitechiques Code..

Description	Summary	Layer
+ TK	Track Edge	Topography
+ TR	Tree with Bole	Greenery
+ VG	Verge	Greenery
+ WE	Waters Edge	Topography
WL	wall	Buildings

Buttons: Add, Edit, Delete

MAP VIEW

Store Point

Point ID: 2

Description: WL

Easting: 998.166m

Northing: 1000.907m

Elevation: 101.474m

Prism Hgt: 0.000m

Store As: Side Shot

Buttons: Store Point, Cancel

Automap Library control: top button shows current figure, bottom one shows current code

Buttons: WL:1, WL

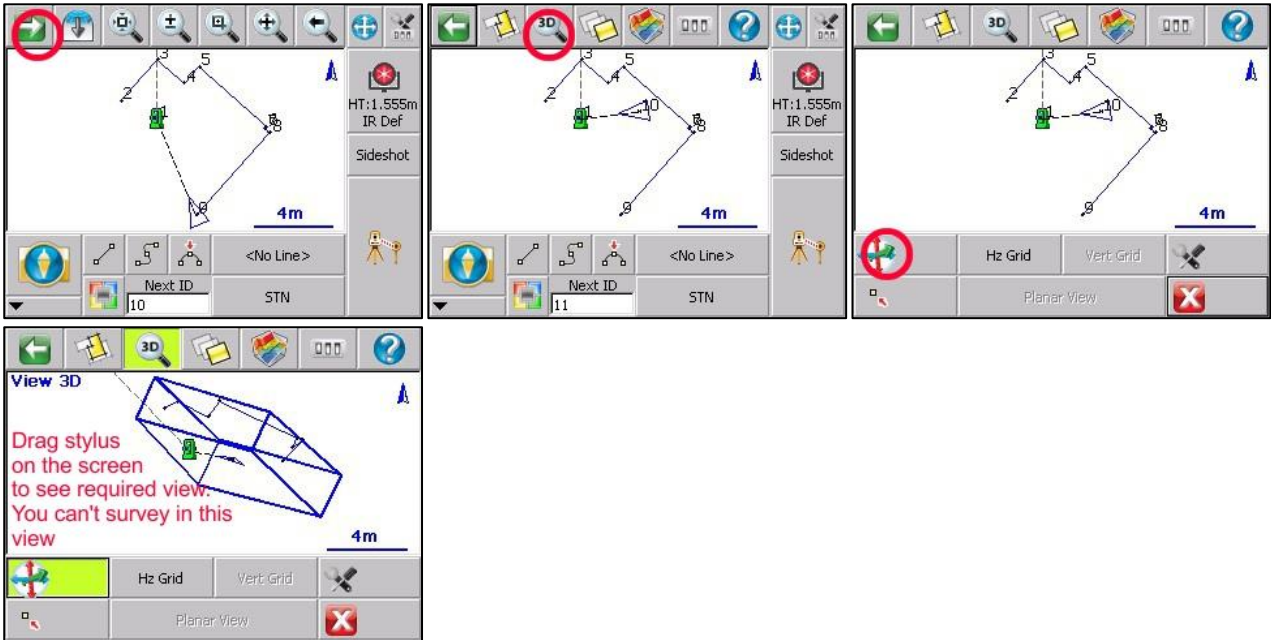
Line type control: Change between straight line, curve, 3 point arc. To start new line tap on line to switch it off, and tap again to start new line

Buttons: WL:1, WL

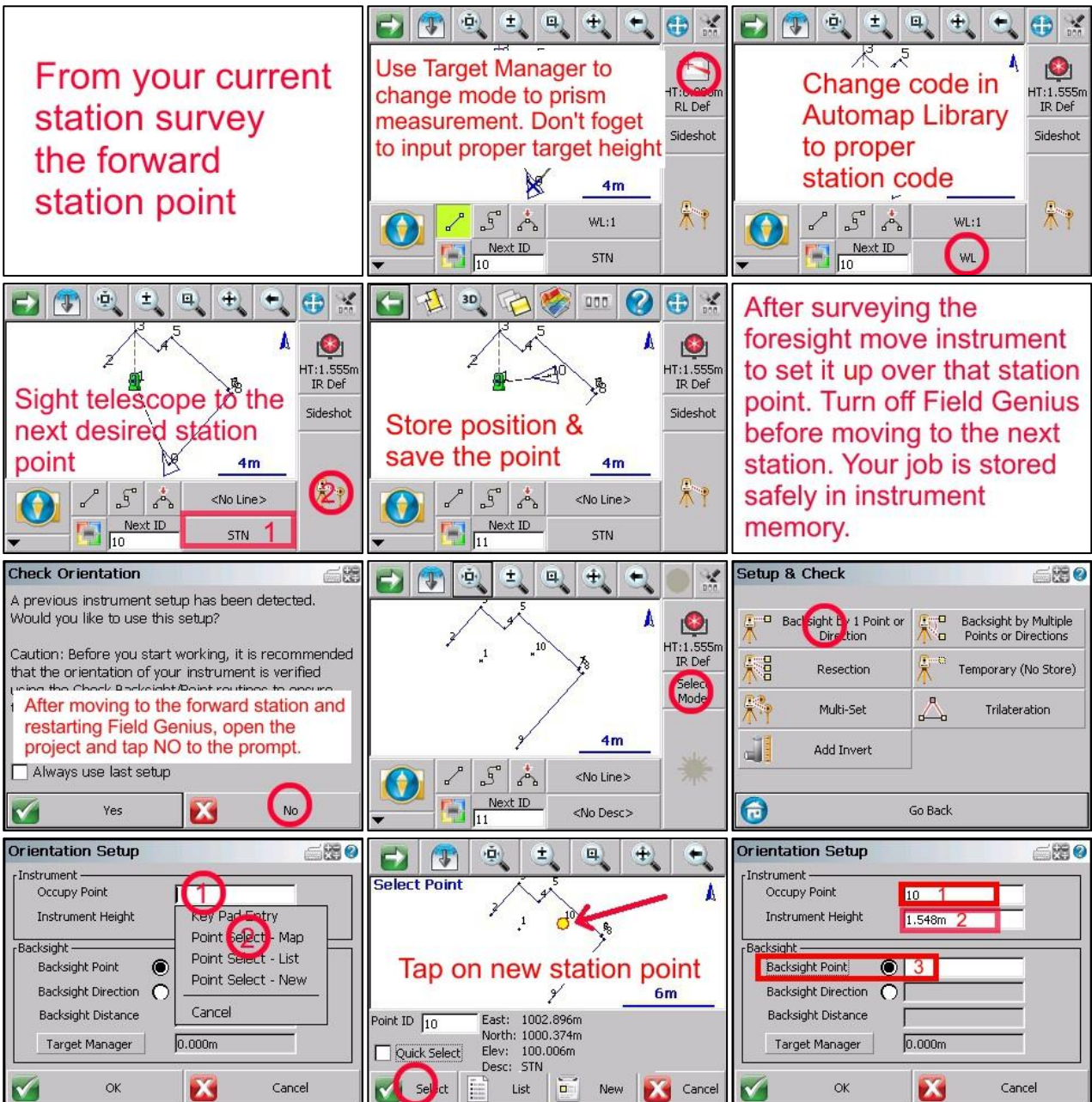
Screen control

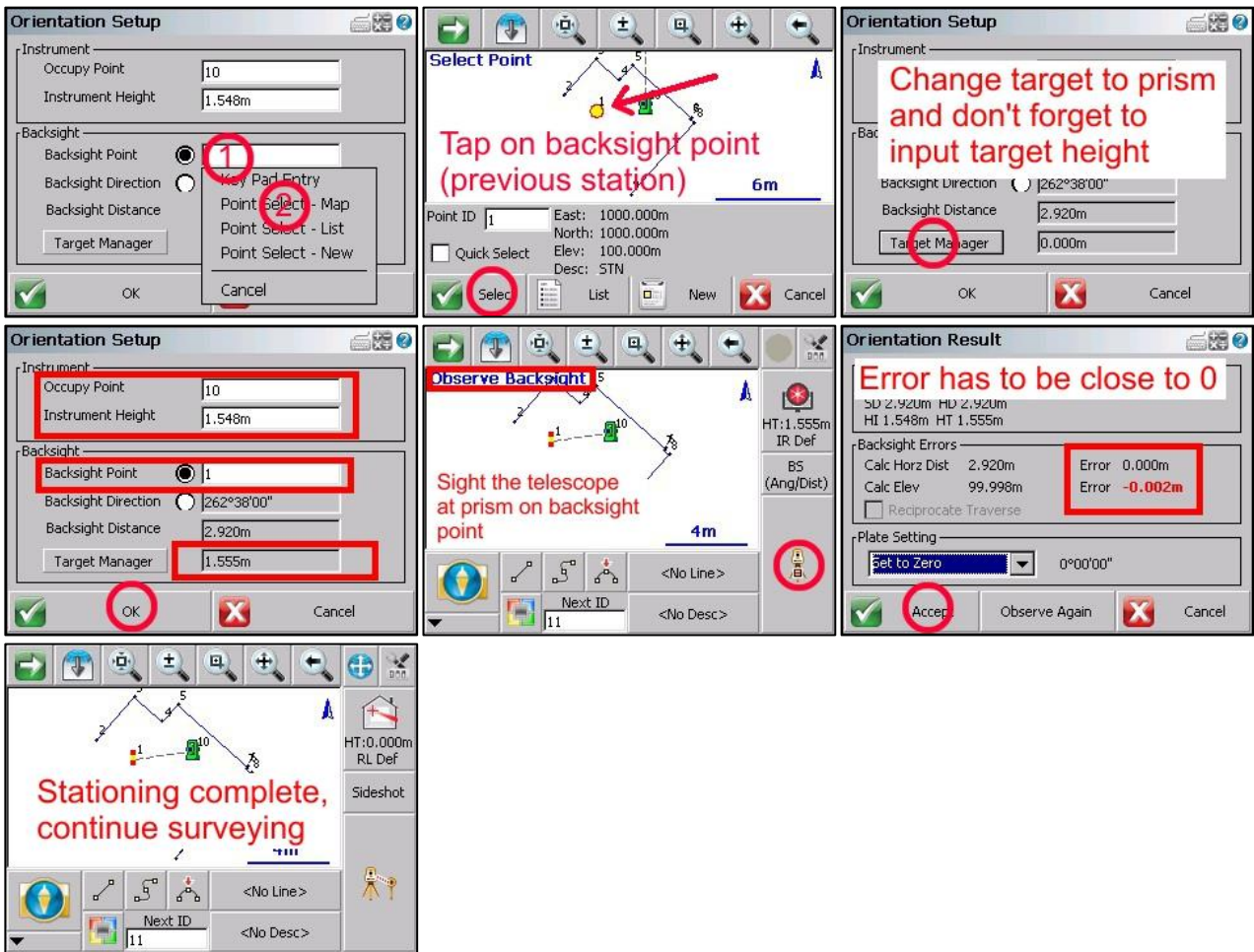
Buttons: Zoom in/out, Zoom window, Zoom pan, Go to last view, Centre prism

Viewing in 3D to see Vertical Faces

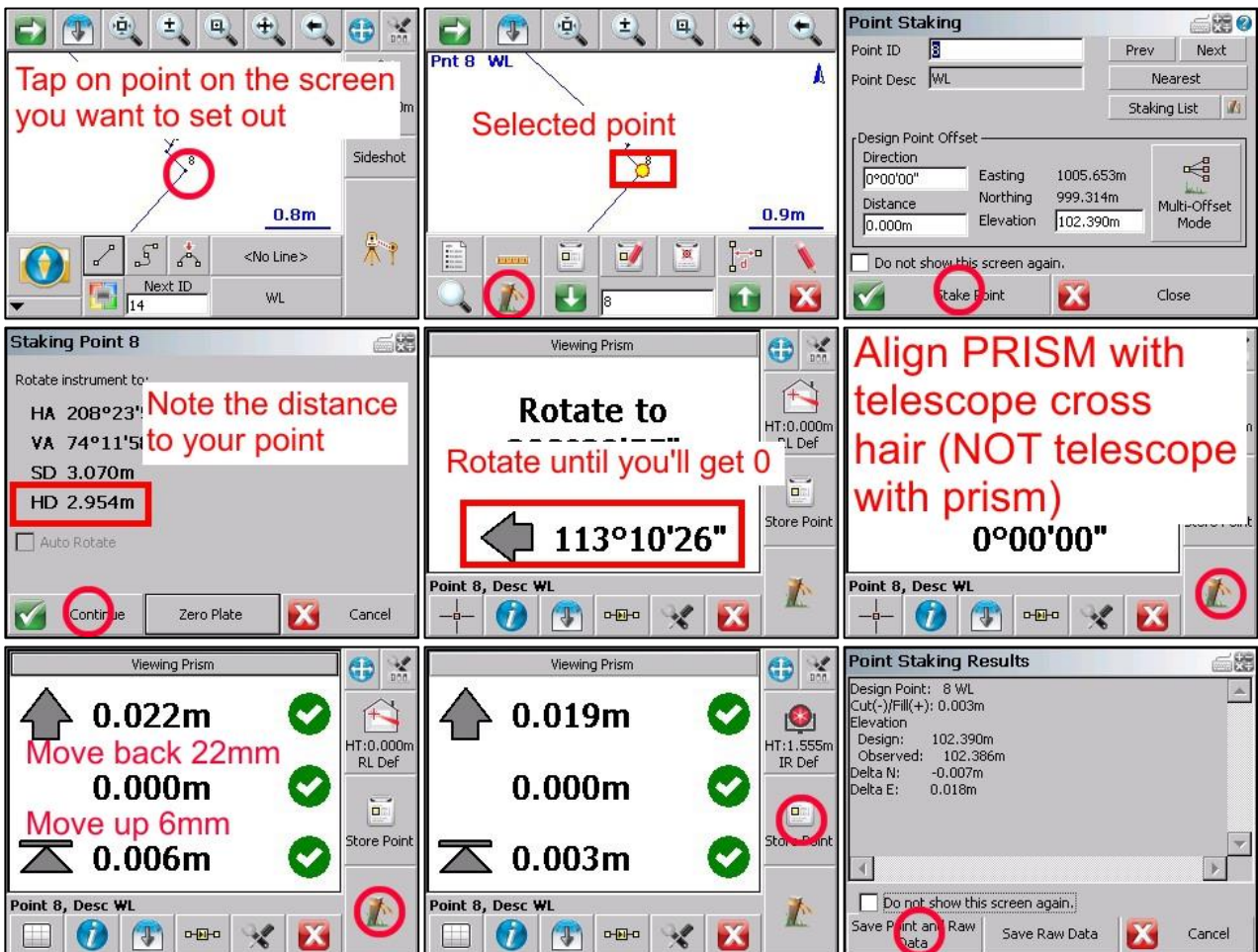


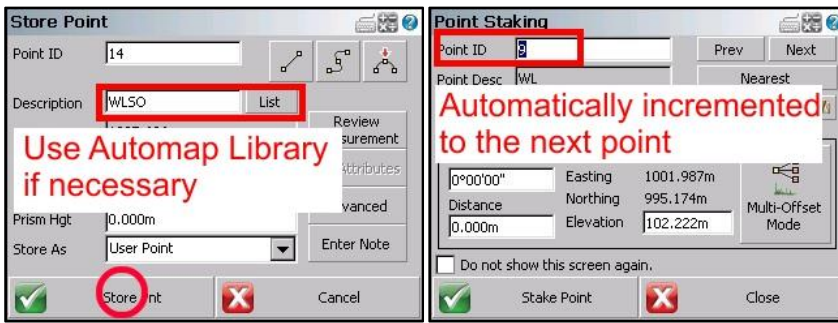
Backsighting to a known station point



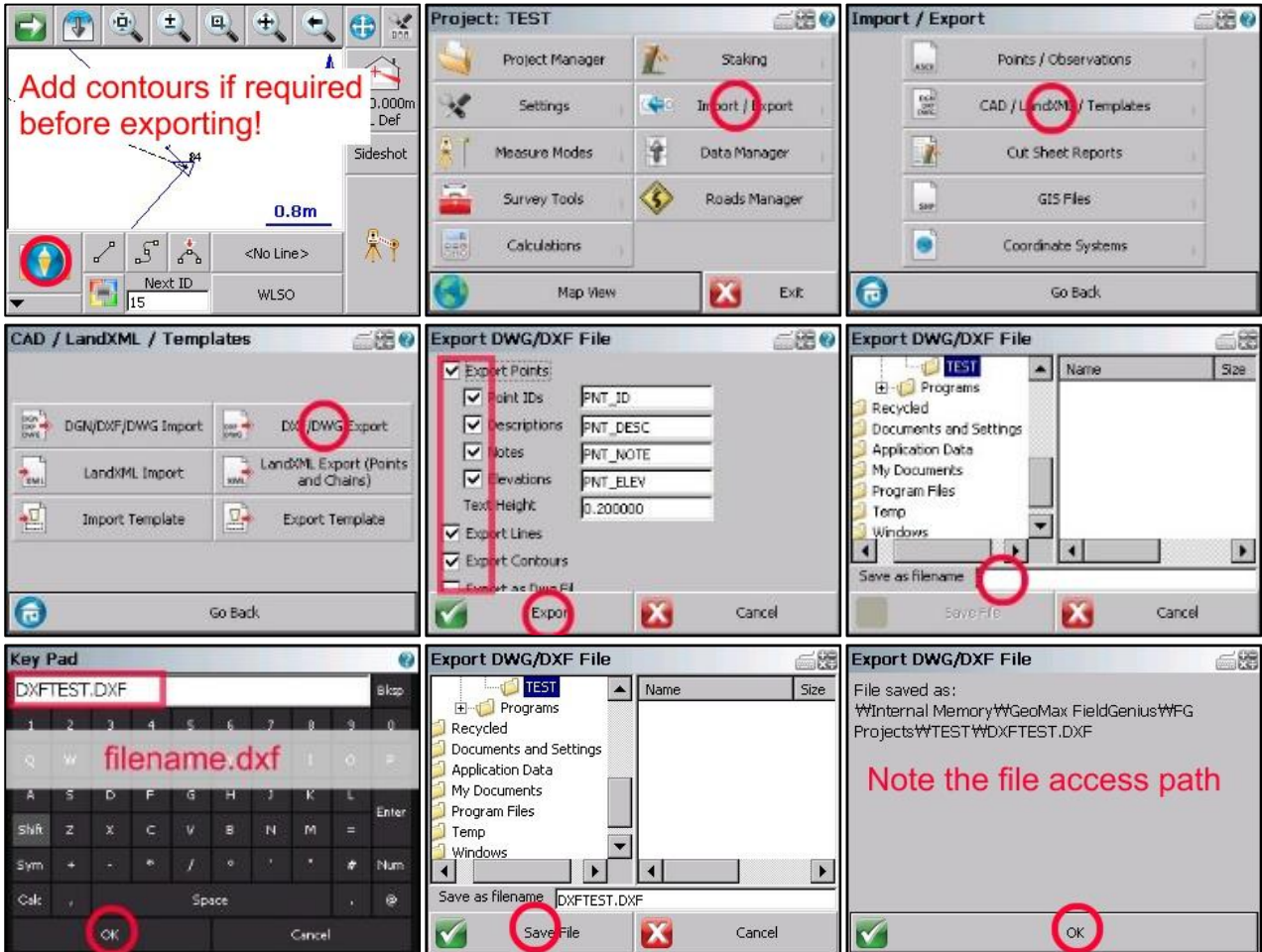


Setting out





Exporting DXF drawing



Transfer files to USB Memory stick

