

# GeoMax TPS

## Zoom40 Series

## GeoMax FieldGenius

## Installation Guide



**Version: 1.0**

**English**

## Table of Contents

<b>1</b>	<b>INTRODUCTION</b> .....	<b>3</b>
<b>2</b>	<b>UPLOADING GEOMAX FIELDGENIUS</b> .....	<b>4</b>
2.1	Windows Mobile Device Center .....	4
2.2	Connecting to the PC .....	4
2.3	Installation of GeoMax FieldGenius .....	4
2.4	Registration of GeoMax FieldGenius .....	8
2.5	Starting GeoMax FieldGenius .....	9
<b>3</b>	<b>RE-, UNINSTALL OR UPDATE GEOMAX FIELDGENIUS</b> .....	<b>10</b>
3.1	Re-Install/Update GeoMax FieldGenius .....	10
3.2	Uninstall GeoMax FieldGenius .....	11

## **1 INTRODUCTION**

This guide provides step-by-step instructions and covers all the required installation tasks for the Zoom40 total station and the GeoMax FieldGenius onboard software.

For further information regarding the operation of the Zoom40, please refer to the respective manuals.

## 2 UPLOADING GEOMAX FIELDGENIUS

### 2.1 WINDOWS MOBILE DEVICE CENTER

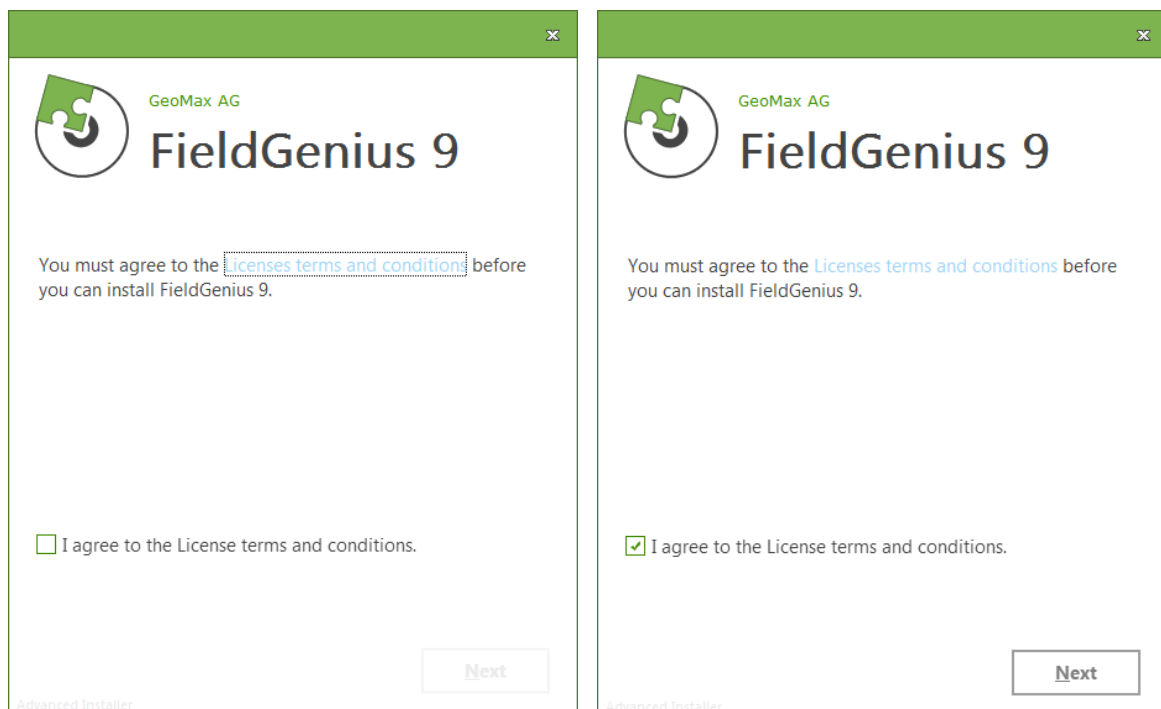
Please refer to *Zoom40 Installation\_V1.0.pdf*.

### 2.2 CONNECTING TO THE PC

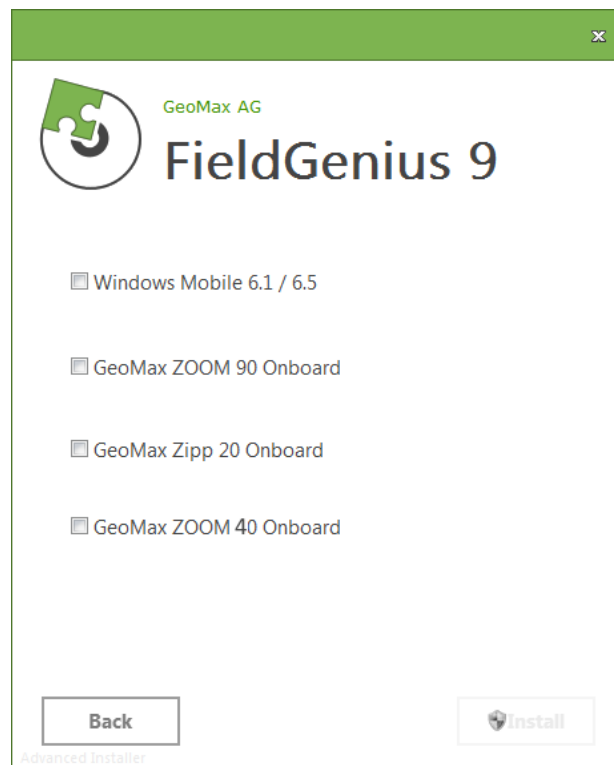
Please refer to *Zoom40 Installation\_V1.0.pdf*.

### 2.3 INSTALLATION OF GEOMAX FIELDGENIUS

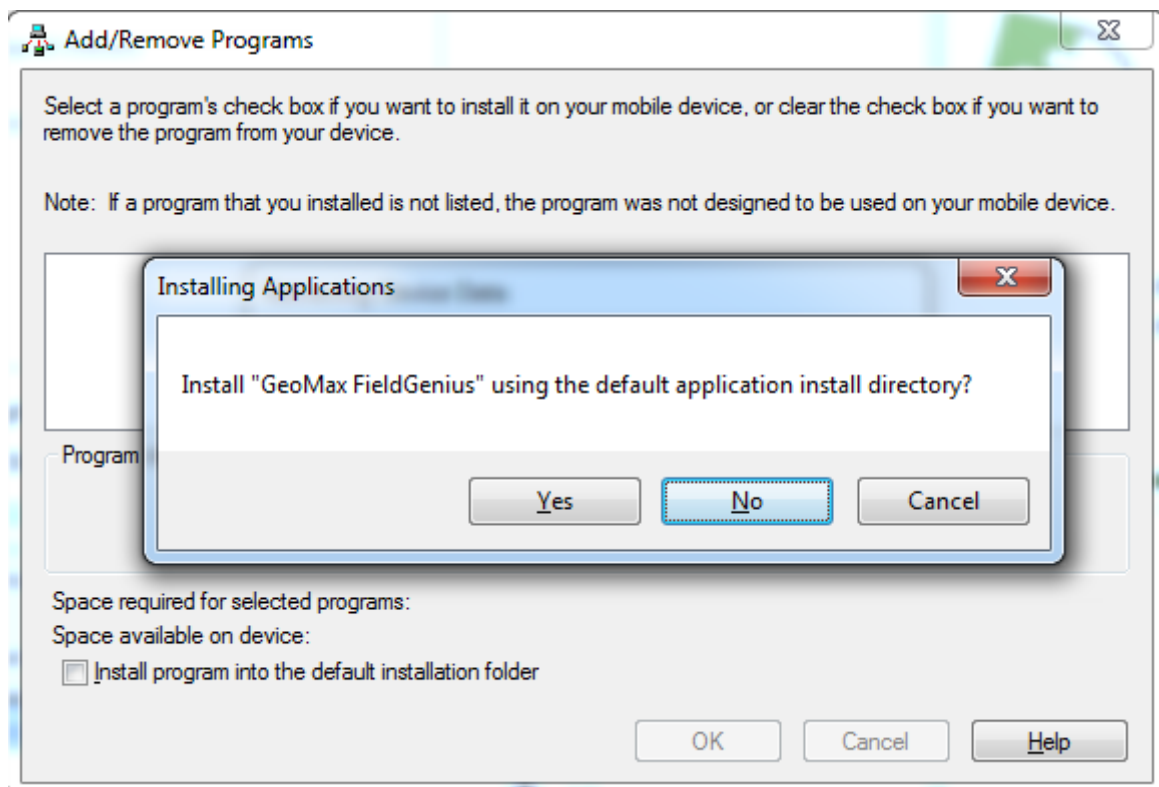
The latest version of GeoMax FieldGenius can be downloaded from the GeoMax website, at <http://www.geomax-positioning.com>. Here the latest installation version and user manual of GeoMax FieldGenius in English is available. Download the *Devices Installer* and save onto your PC. On this page, all the available languages for FieldGenius are shown. Click on the required language and save the installation file onto your PC. With the Zoom40 connected to your PC, run the installer. The PC will attempt to connect to the instrument and install the GeoMax FieldGenius software. Follow the Windows installation wizard.

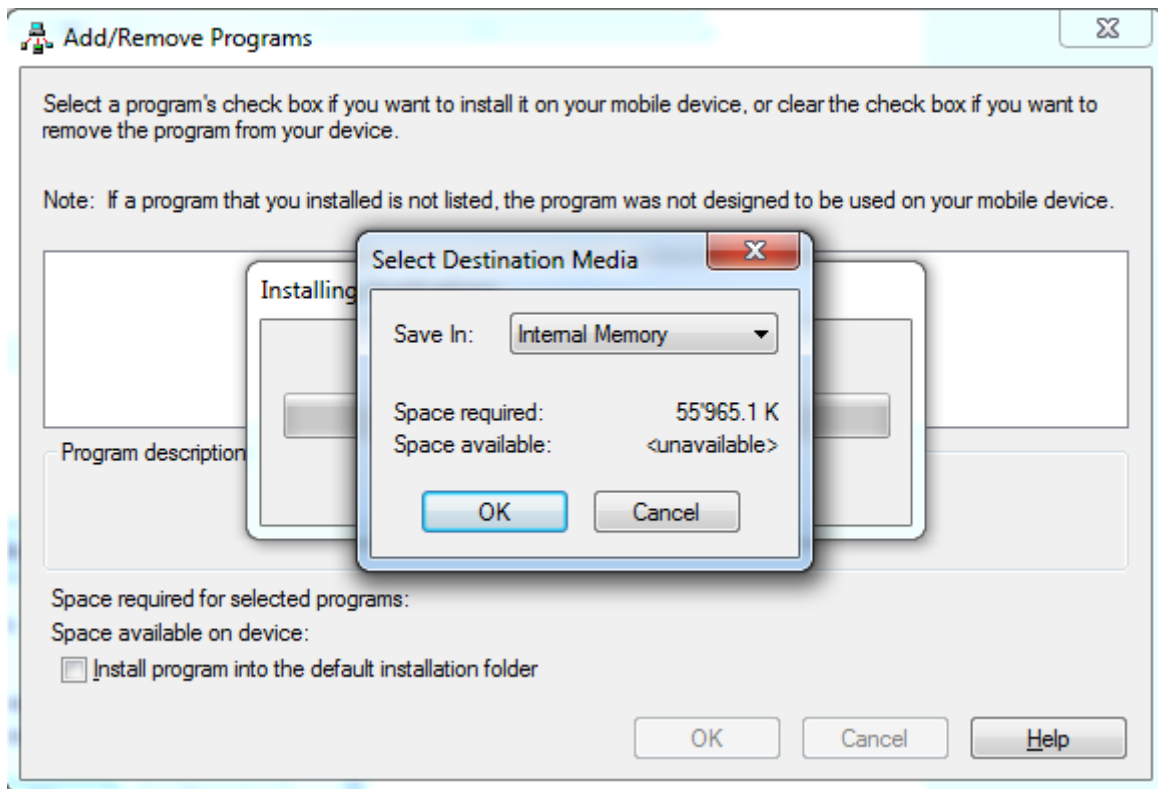


At the Device Selection window select the *GeoMax Zoom40 Onboard* and press the INSTALL button.

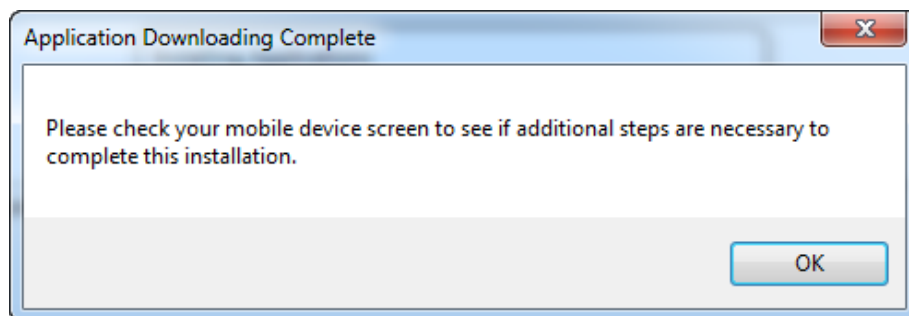


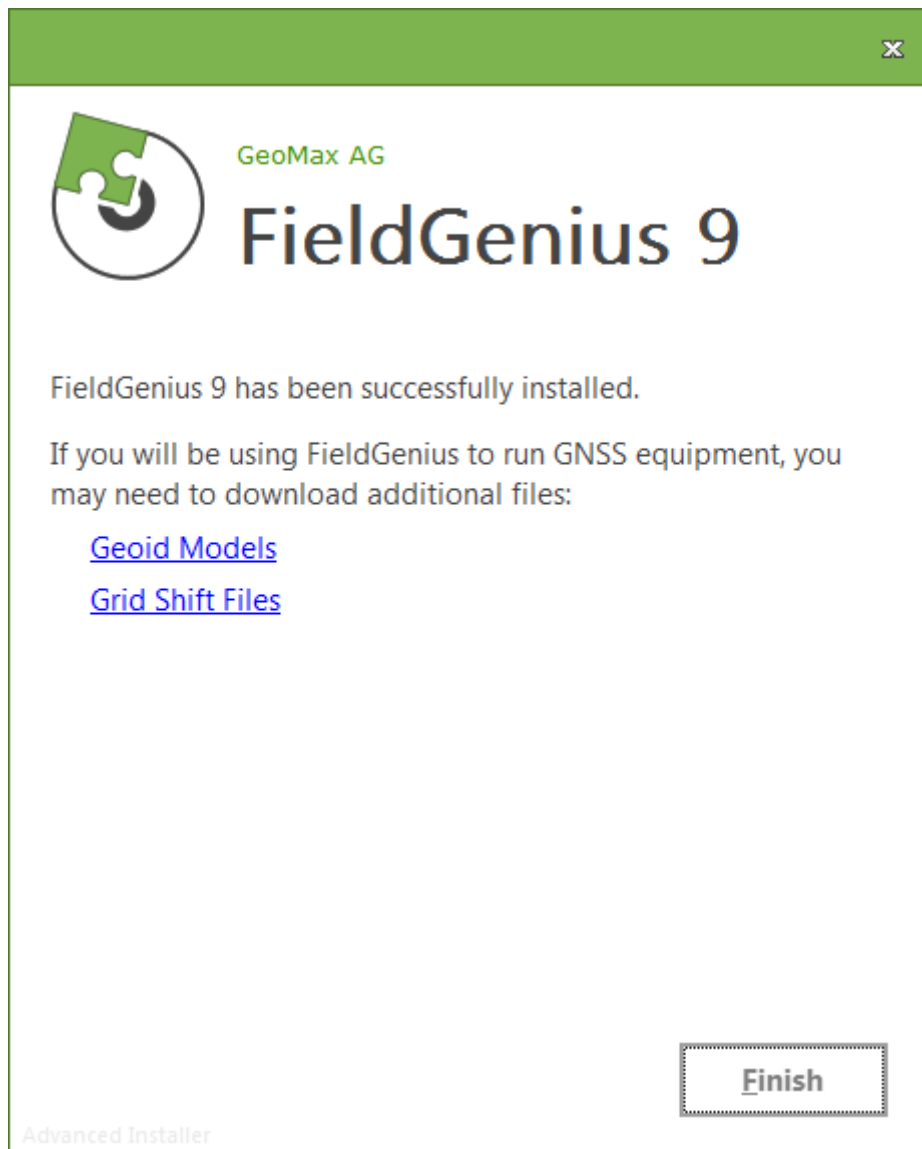
Please select **“No”** when prompt for Default Installation Path and then choose **“Internal Memory”** of the Total Station to install the program.





When the application downloading is completed, you are requested to check the Zoom40 screen. Click OK and Finish to exit the installation process on your PC.

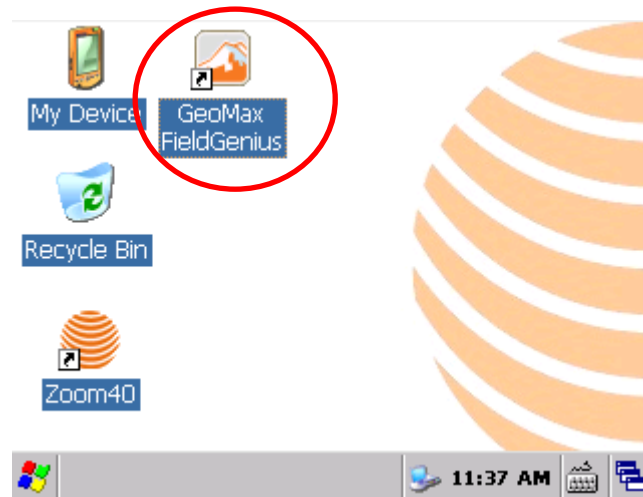




Confirm the proposed installation folder for GeoMax FieldGenius on the Zoom40 screen by clicking OK. The installation on the Zoom40 will be started.



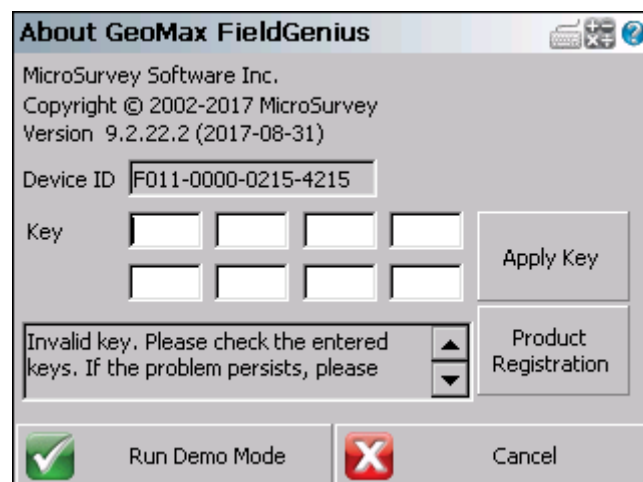
Once the installation process is completed, the GeoMax FieldGenius software can be started by selecting it from the Zoom40 Desktop.



## 2.4 REGISTRATION OF GEOMAX FIELDGENIUS

When GeoMax FieldGenius is started, a registration window with the Device ID is displayed as shown below. It is possible to use GeoMax FieldGenius without registration by tapping **Run Demo Mode**. This provides full functionality, but is limited to the storage of 30 points.

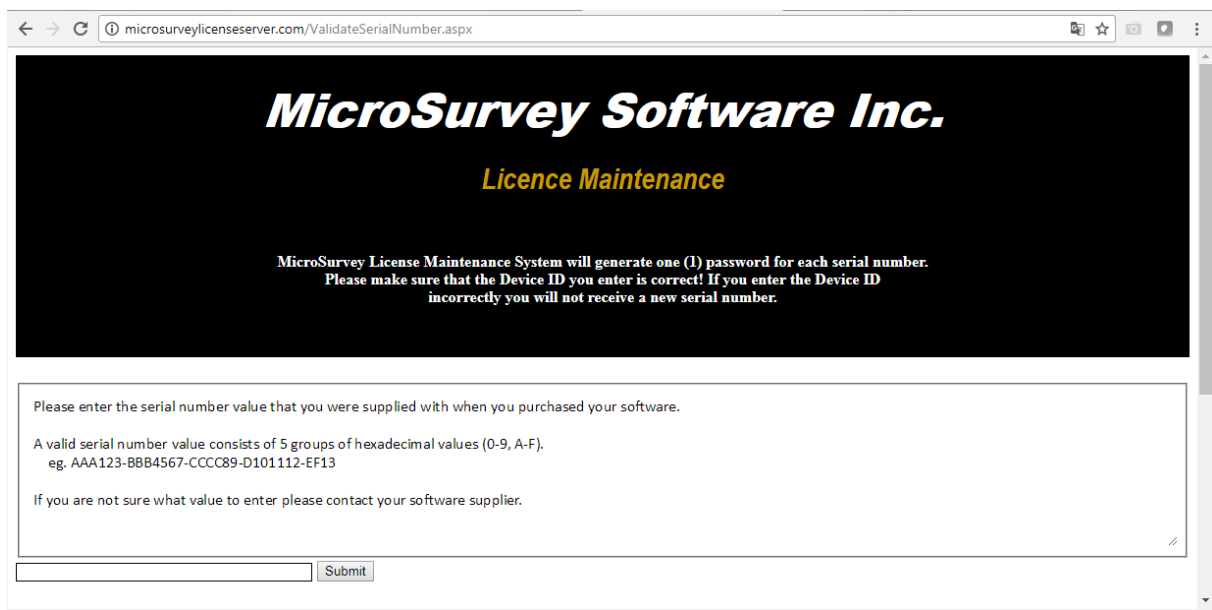
To register your version of GeoMax FieldGenius, an activation key needs to be entered. The displayed Device ID, together with the GUID (global unique identity), is used to obtain the key. The GUID can be found in the MicroSurvey envelope that was supplied together with Zoom40 equipment.





The activation key can be generated by using MicroSurvey's web portal, at the link <http://microsurveylicenseserver.com/ValidateSerialNumber.aspx>. This web portal is shown in the screenshot below. At the blank serial number field, enter your GUID and click **Submit**. At the next screen, enter the Device ID shown on the Zoom40.

**Note:** Make certain that the entered Device ID is correct the first time, since an activation key cannot be generated again with a different ID.



MicroSurvey Software Inc.  
*Licence Maintenance*

MicroSurvey License Maintenance System will generate one (1) password for each serial number.  
Please make sure that the Device ID you enter is correct! If you enter the Device ID incorrectly you will not receive a new serial number.

Please enter the serial number value that you were supplied with when you purchased your software.

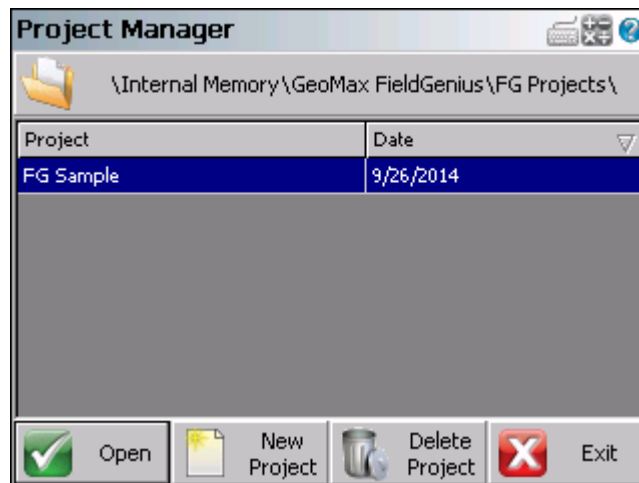
A valid serial number value consists of 5 groups of hexadecimal values (0-9, A-F).  
eg. AAA123-BBB4567-CCCC89-D101112-EF13

If you are not sure what value to enter please contact your software supplier.

The activation key will then be displayed in the password field. Enter this key into the Zoom40 at the provided fields and click **Apply Key**. More details about the GeoMax FieldGenius installation and registration can be found in the user manual available from the GeoMax Partner Area.

## 2.5 STARTING GEOMAX FIELDGENIUS

The first screen displayed when starting GeoMax FieldGenius is the Project Manager. Create a new project by tapping the appropriate icon and enter a project name. The onscreen keyboard can always be accessed by double tapping on the editable field. The screens that follow are used to set the default settings for this project.



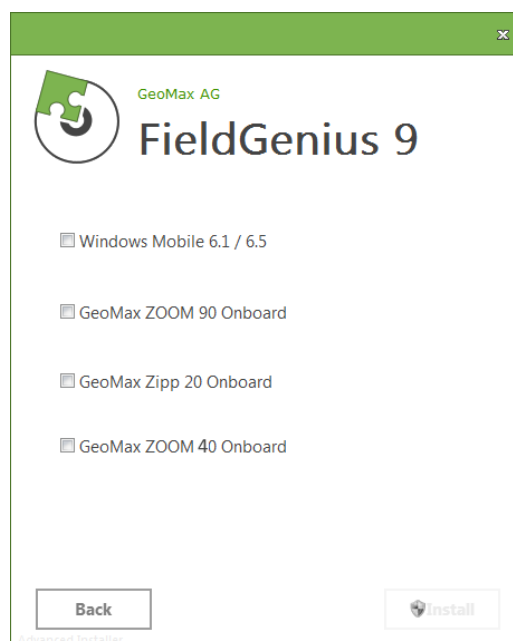
You are now ready to work with the Zoom40 total station and GeoMax FieldGenius. More details about the use of GeoMax FieldGenius can be found in the user manual document available from the GeoMax Partner Area.

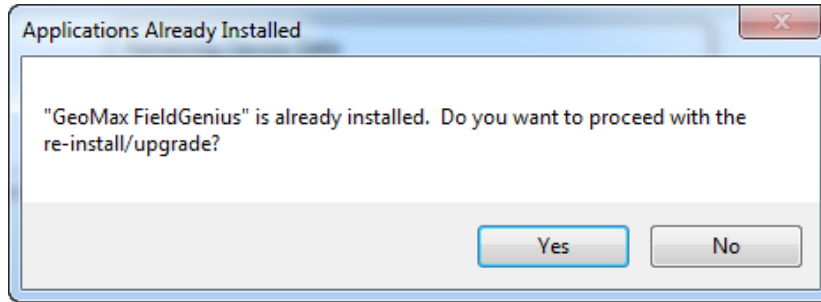
### 3 RE-, UNINSTALL OR UPDATE GEOMAX FIELDGENIUS

#### 3.1 RE-INSTALL/UPDATE GEOMAX FIELDGENIUS

Occasionally it may be necessary to update or reinstall your GeoMax FieldGenius software. An update or re-install of the GeoMax FieldGenius software follows mainly the procedure which was described in this document in chapter 3.3 *Installation of GeoMax FieldGenius*. To start the update or re-install please refer to chapter 3.3.

After clicking *Install*, the installation file will detect the current installed GeoMax FieldGenius software.

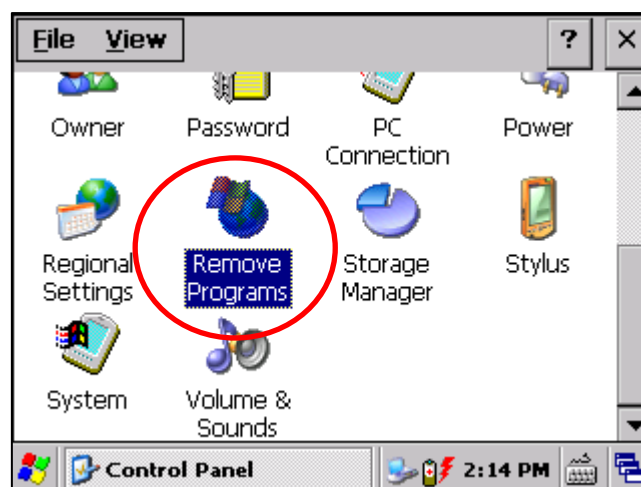
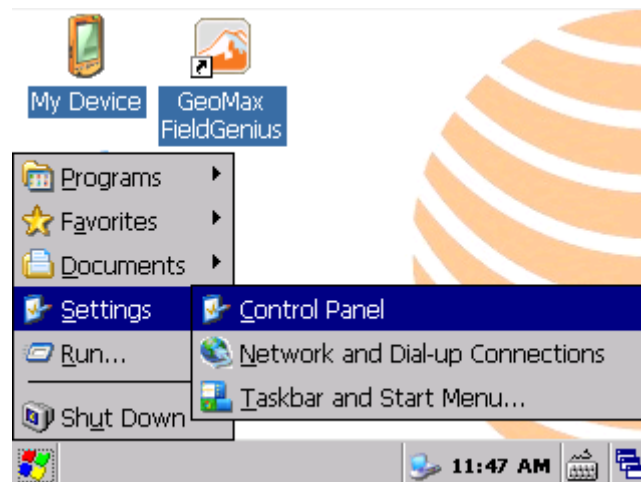


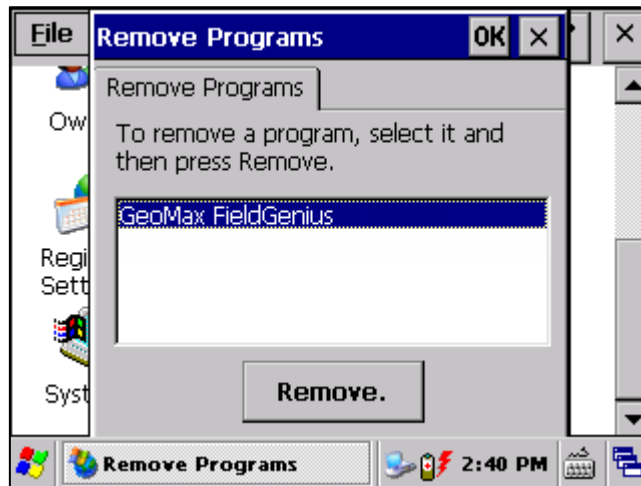


Confirm this message by clicking **Yes**. The installation will be continued as known from the very first installation.

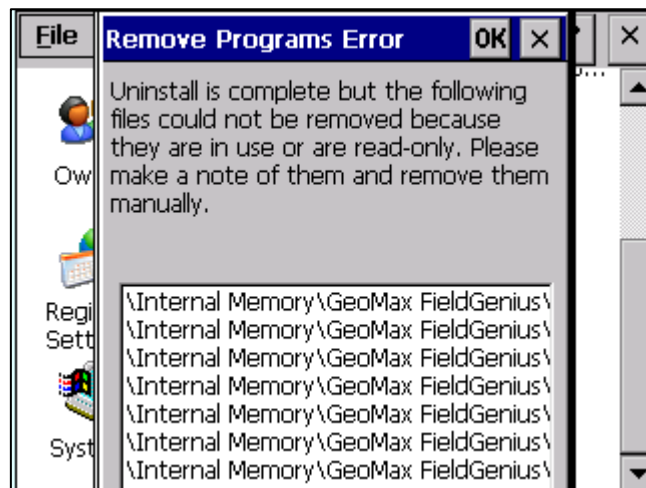
### 3.2 UNINSTALL GEOMAX FIELDGENIUS

To uninstall *GeoMax FieldGenius* from the Zoom40, you need to start the software at least one time after the instrument has been turned on. Exit GeoMax FieldGenius again and go to the Windows program "Remove Programs".

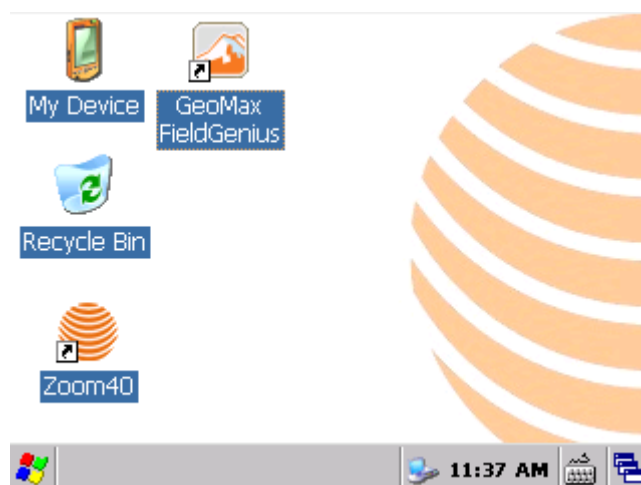


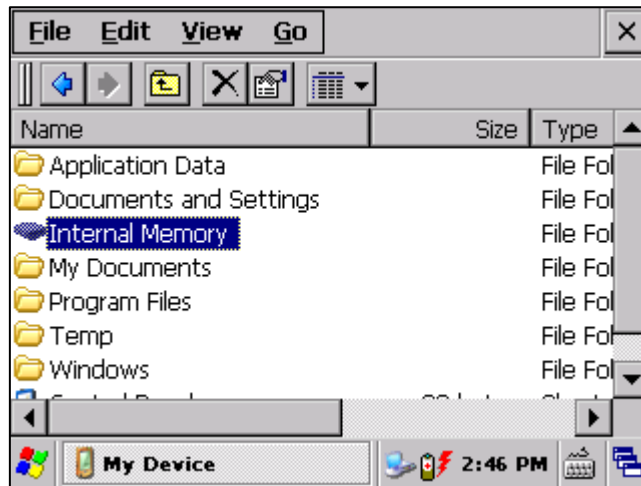


Mark *GeoMax FieldGenius* and click **Remove**. The program will be removed. A message appears as further folder and files still need to be removed.



In order to complete the uninstall process, the following folder and files need to be deleted manually. Please access the Windows Explorer with *My Device*.





The following folder and files needs to be deleted in the *Internal Memory* drive:

- Internal Memory\GeoMax FieldGenius (remove complete folder)
- *GeoMax FieldGenius.Ink* in Internal Memory\Documents and settings\Programs
- *GeoMax FieldGenius.Ink* in Internal Memory\Documents and settings\Desktop

To finish the uninstall process the instrument needs to be shut down.